

Parts Ordering

Orders for spare parts can be placed with any of our Sales Representatives.

OFM Pump, Inc.

P.O. Box 12192

2243 FM 1936 RD.

Odessa, TX 79763

OFF.: (432) 381-7390

OFF.: (877) 381-7390

Fax: (432) 385-1205

When placing an order for spare parts with OFM, You can speed up the process by having the following information when you place your order:

- Pump Model and Fluid End Size and serial number – see identification tags on the pump.
- OFM part number, description and quantity of parts.
- Complete shipping address (Where the parts are to be shipped).
- Complete Billing address (Where the invoice is to be sent).
- The Name of your company.
- Name of person placing the order.
- Purchase order number (If required by you company).
- Carrier (Shipping preference).
- Telephone and Contact person.
- Contact information if shipment is made to different address.

Table of Contents

- Power End Assembly
- Power End Parts List
- Crankshaft Assembly
- Crosshead Assembly
- Gear Box Assembly
- Gear Box Parts List
- Gear Box / Power Frame Assembly Options
- 1000 HP Fluid End Assembly
- 1000 HP 3-1/2 inch Plunger
- 1000 HP 3-3/4 inch Plunger
- 1000 HP 4 inch Plunger
- 1000 HP 4-1/2 inch Plunger
- 1000 HP 5 inch Plunger
- 1000 HP 5-1/2 inch Plunger
- 1000 HP 6 inch Plunger
- Discharge Cover Options 3-1/2 inch Fluid Ends
- Discharge Cover Options 3-3/4 inch to 4 inch Fluid Ends
- Discharge Cover Options 4-1/2 inch Fluid Ends
- Discharge Cover Options 5 inch Fluid Ends
- Discharge Cover Options 5-1/2 inch to 6 inch Fluid Ends
- Discharge Flange Options 3-1/2 inch to 5 inch Fluid Ends
- Discharge Flange Options 5-1/2 inch to 6 inch fluid Ends
- Valve Seat Puller (Optional)
- Maintenance Tools

OFM 1000 PUMP

PUMP SPECIFICATIONS

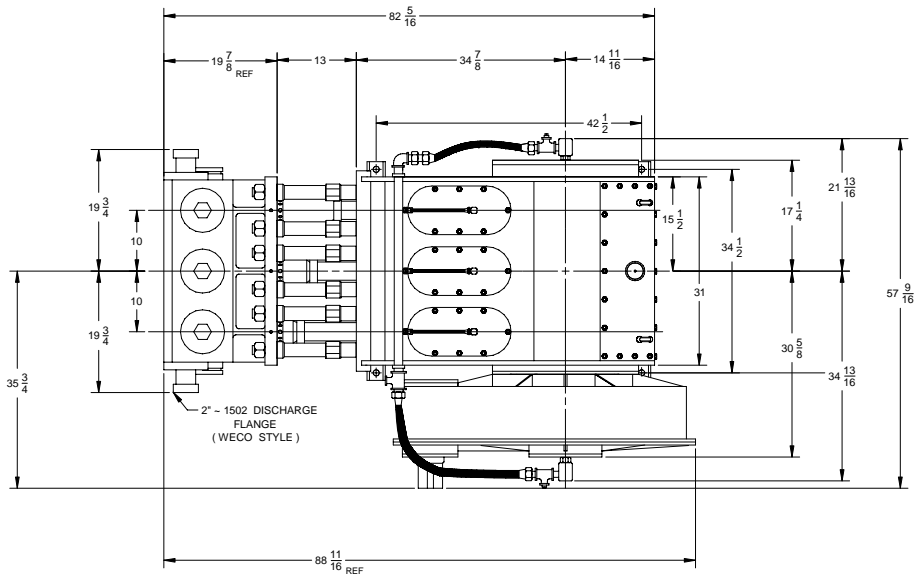
RATED BRAKE HORSEPOWER	1000
MAXIMUM ROD LOAD	160,000 #
STROKE LENGTH	8"
OVERALL LENGTH	87-13/16"
OVERALL WIDTH	57-9/16"
OVERALL HEIGHT	43-1/2"
WEIGHT	APROX. WT. 9000 LBS
GEAR RATIO	6.353 : 1

PERFORMANCE DATA

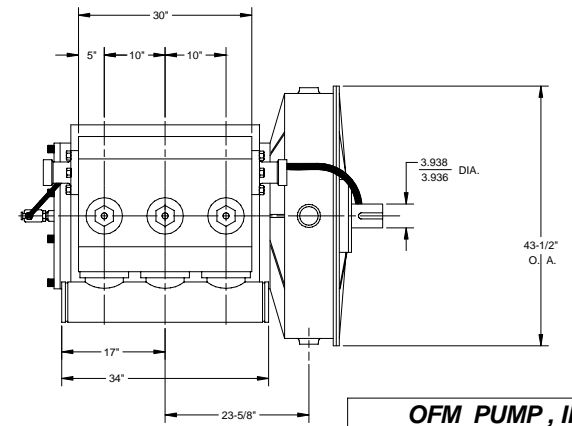
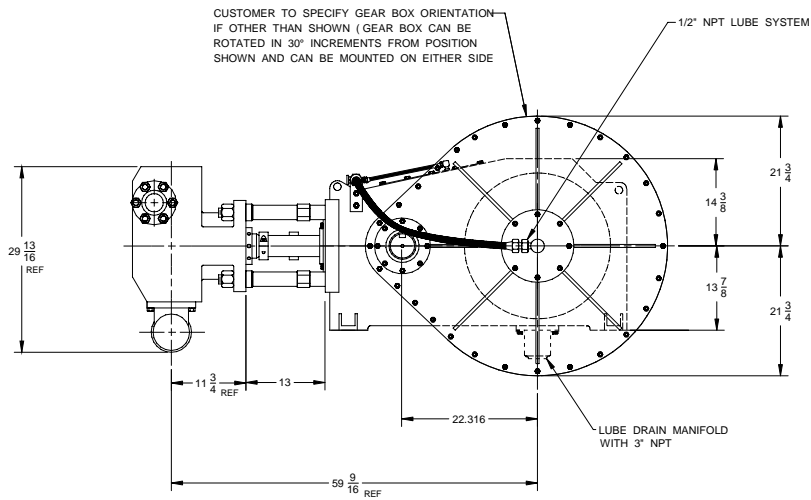
PLUNGER DIAMETER (INCHES)	GAL. PER. REV.	GPM AT PUMP RPM											
		50		100		200		250		300		330	
		GPM	PSI	GPM	PSI	GPM	PSI	GPM	PSI	GPM	PSI	GPM	PSI
6	2.94	147	5659	294	4958	587	2480	734	1985	880	1654	969	1503
5-3/4	2.70	135	6250	270	5403	539	2700	674	2161	809	1801	890	1636
5-1/2	2.47	123	6735	247	5900	493	2950	617	2360	740	1968	814	1789
5	2.04	102	8152	204	7150	408	3575	510	2860	612	2381	673	2165
4-1/2	1.65	83	10060	165	8820	330	4410	413	3526	496	2940	545	2673
4	1.31	65	12736	131	11160	261	5580	326	4465	392	3720	431	3382
3-3/4	1.15	57	14490	115	12700	230	6350	287	5080	345	4230	379	3846
3-1/2	1.00	50	16630**	100	14559	200	7290	250	5825	300	4850	330	4410
BRAKE HORSEPOWER*		579		1000		1000		1000		1000		1000	
PINION RPM		318		635		1271		1588		1950		2096	

*BASED ON 85% ME AND 100% VE

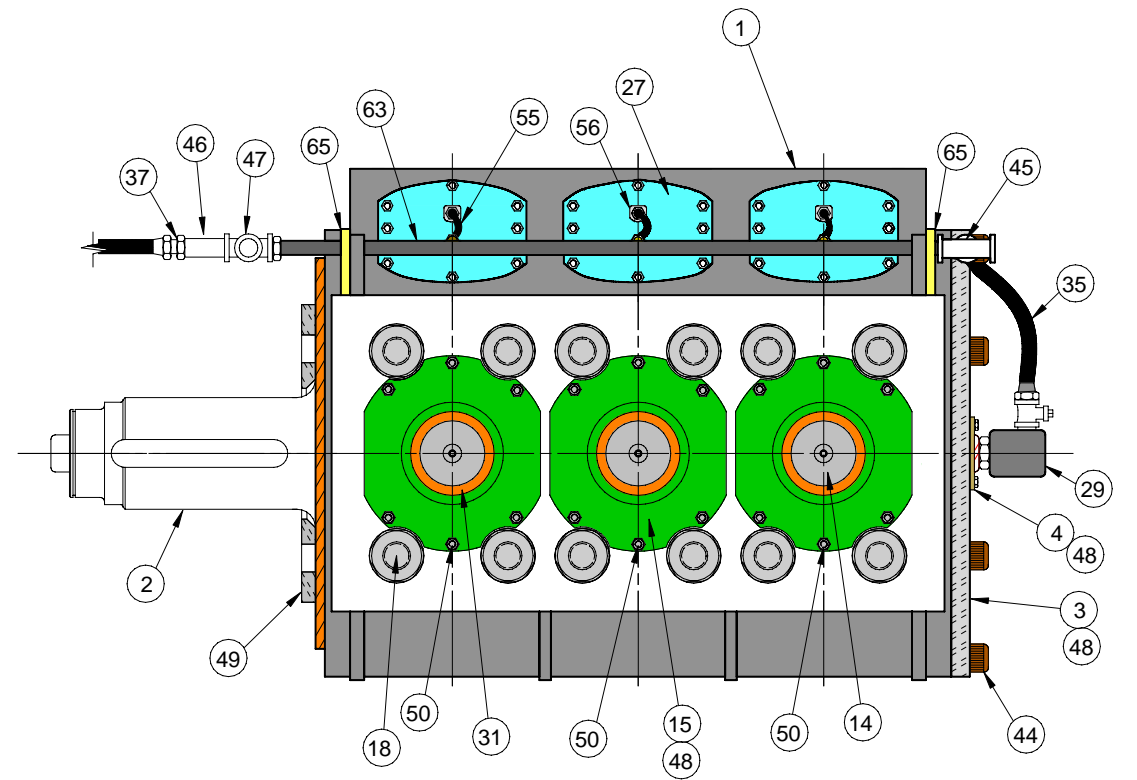
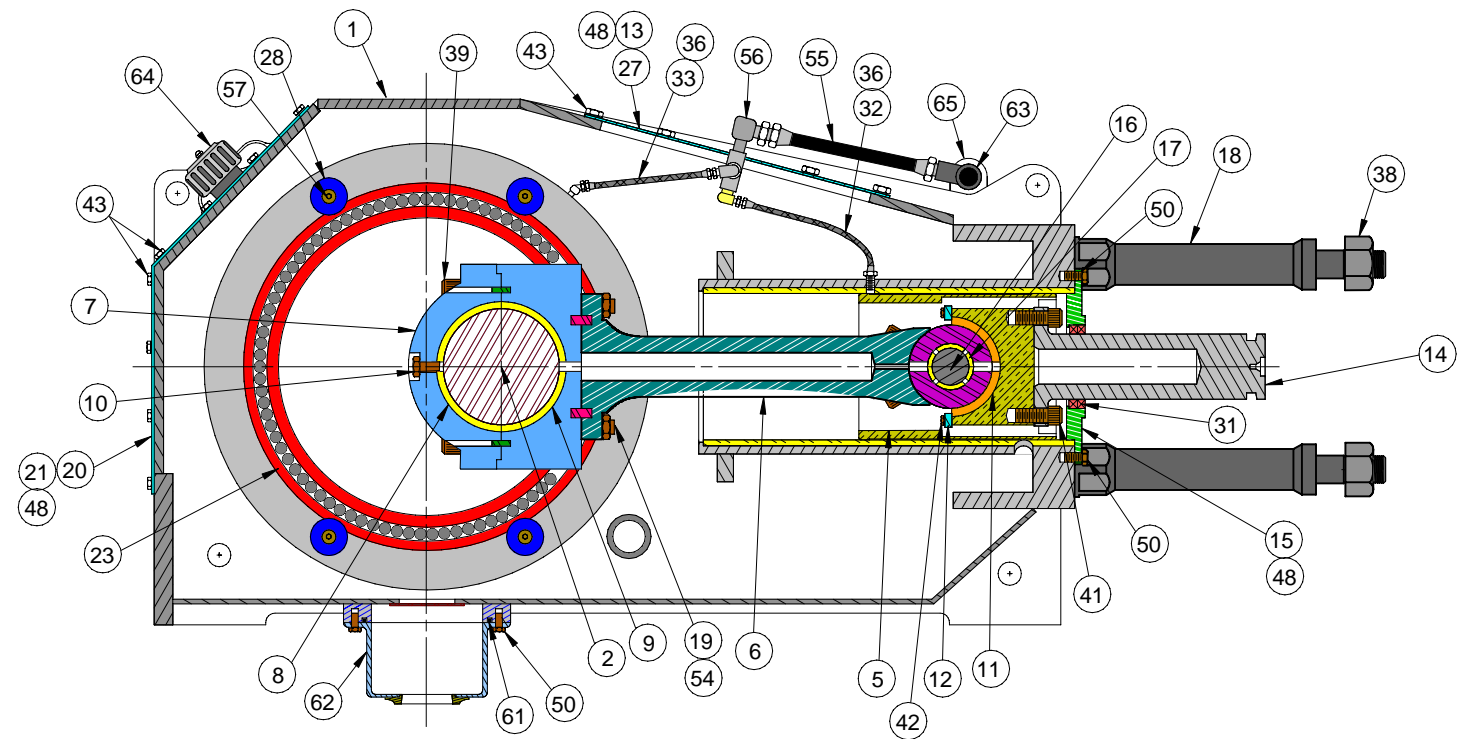
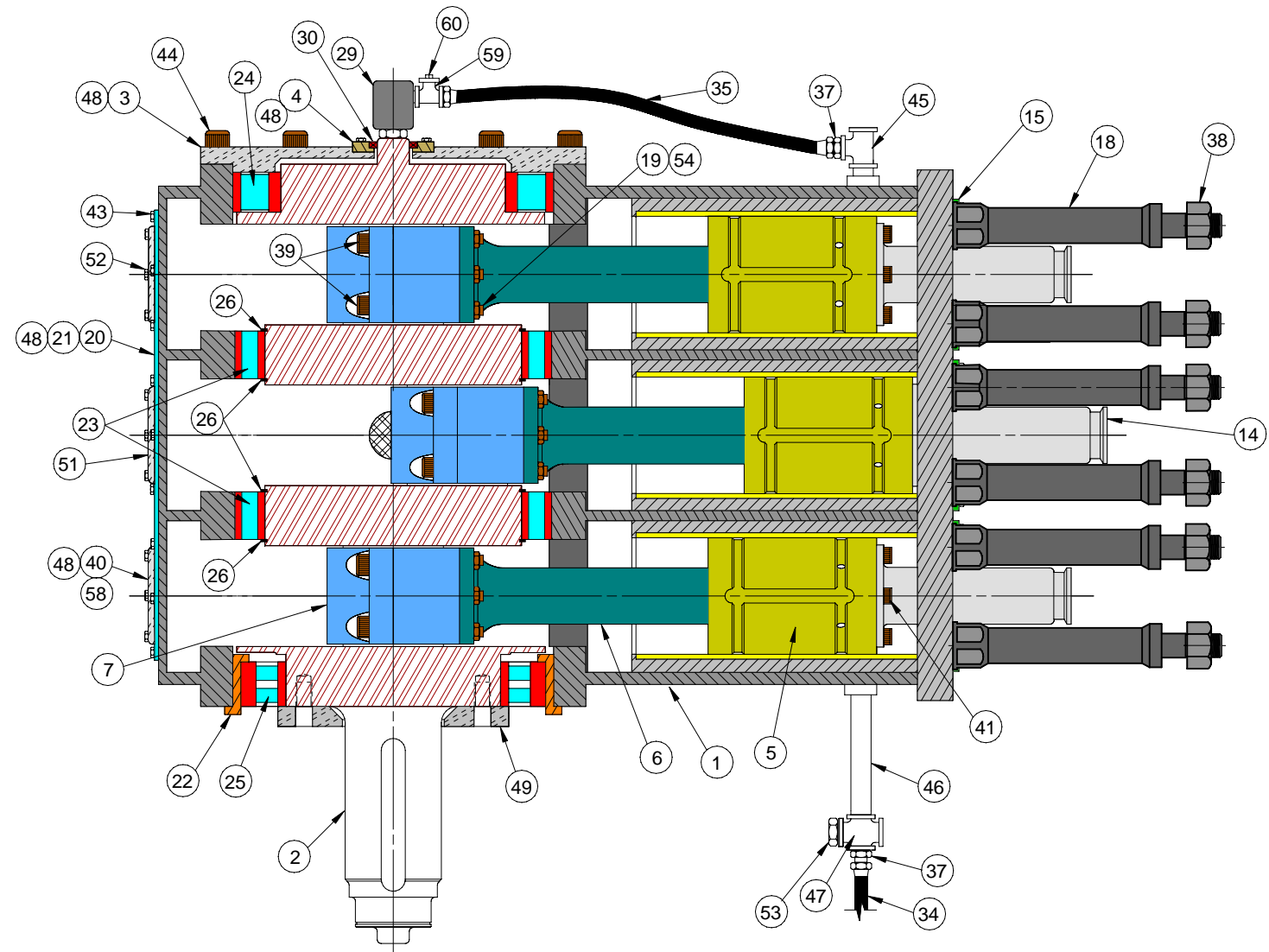
**APPLICATION TO BE APPROVED BY OFM



INSTALLATION DETAIL
 OFM MODEL 1000
 GEAR RATIO 6.353 : 1
 APPROX. WEIGHT 8500 LBS.



OFM PUMP, INC.		INSTALLATION DETAIL FOR OFM MODEL 1000	
DRAWN L. GORRELL	1-1-97	SIZE D	DWG NUMBER 1000 HP DIM. SPEC.
MATERIAL:		REV -	SHEET 1 OF 1
APPROVED Name	1-1-97	SCALE 1 : 10	



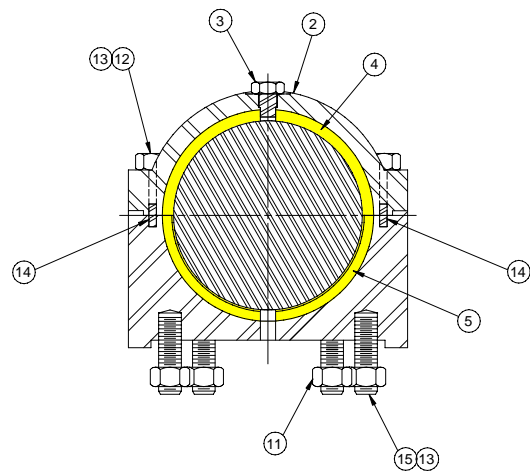
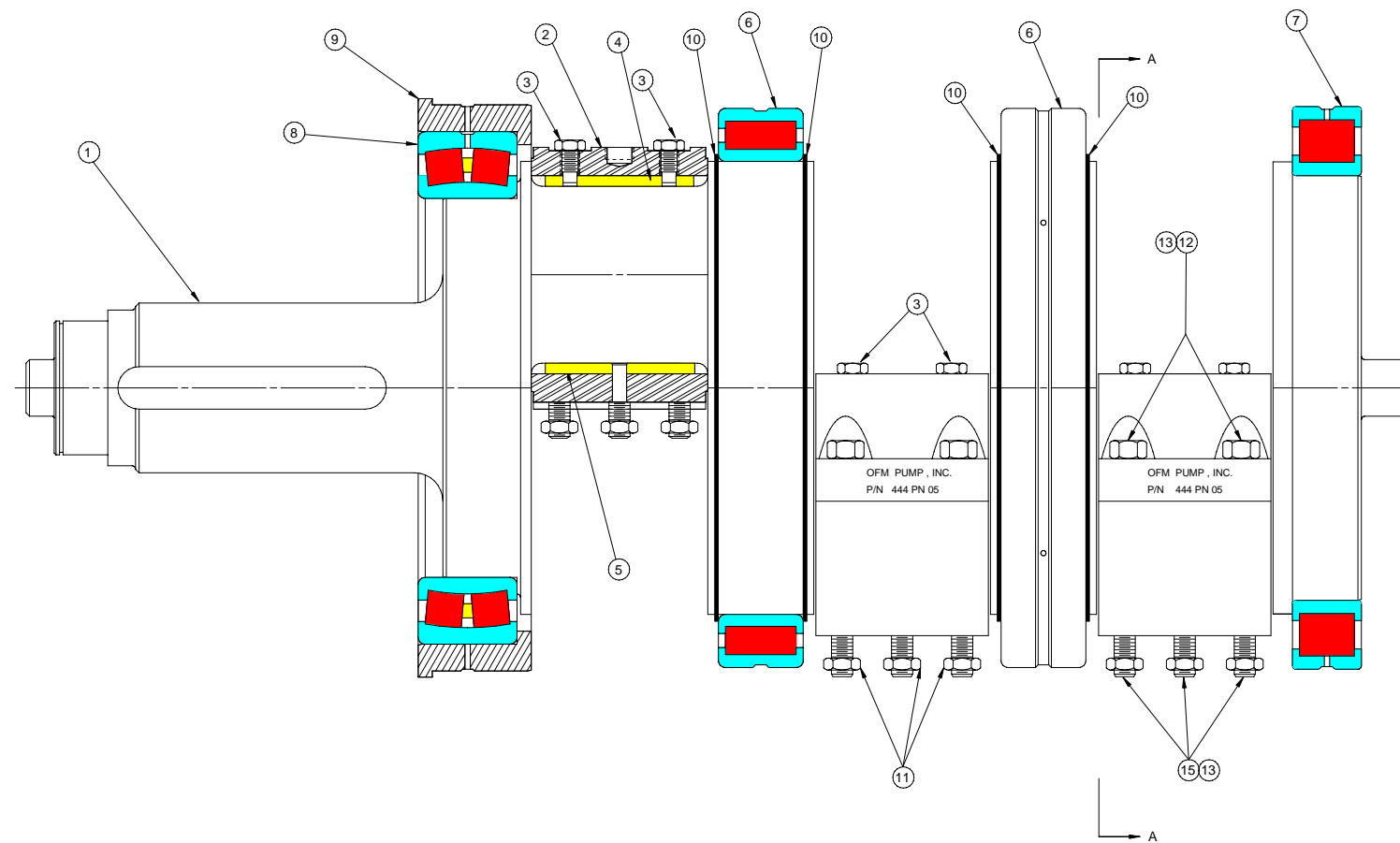
OFM PUMP, INC.			
DRAWN LG	1/08/2009	ASSEMBLY AND B.O.M. FOR 1000 HP P.E.	
MATERIAL :		SIZE D	DWG NUMBER 1000AD033
CHECKED BY: FCF	1-1-97	REV -	SHEET 1 OF 1
SCALE 1:5			

ITEM NO.	PART NO.	QTY.	DESCRIPTION
1	1000PN033	1	POWER FRAME
2	473PN12-1	1	CRANKSHAFT (SEE DRAWING 81AD07A)
3	492PN03	1	FREE END BEARING RETAINER
4	500-A-18	1	FREE END SEAL RETAINER
5	540PN07	3	CROSSHEAD (SEE DRAWING 100AD03-1)
6	551PN07	3	CONNECTING ROD (SEE DRAWING 100AD03-1)
7	444PN05	3	ROD BEARING HOUSING (SEE DRAWING 81AD07A)
8	917PN08-3	3	ROD BEARING (CAP HALF) (SEE DRAWING 81AD07A)
9	917PN08-4	3	ROD BEARING (BASE HALF) (SEE DRAWING 81AD07A)
10	550PN001-3	3	BOLT , ROD BEARING RETAINER (SEE DRAWING 81AD07A)
11	917PN12	3	BRONZE THRUST SEAT (SEE DRAWING 100AD03-1)
12	500-A-27-1	6	THRUST SEAT KEEPER (SEE DRAWING 100AD03-1)
13	565PN100	3	GASKET , LUBE COVER
14	286PN003	3	PONY ROD
15	491PN014	3	PONY ROD SEAL RETAINER
16	630PN07	3	WRIST PIN (SEE DRAWING 100AD03-1)
17	500-A-03	3	WRIST PIN BUSHING (SEE DRAWING 100AD03-1)
18	453PN009M	12	STAY ROD , 13" LONG SHOULDER TO SHOULDER
19	450VP003-034	18	STUD , 3/4" ~ 10 UNC X 3-1/2" LONG (SEE DRAWING 81AD07A)
20	1000PN020	1	REAR COVER
21	565PN038	1	GASKET , BACK COVER , 104" GASKET MATERIAL
22	441PN04	1	BEARING ADAPTER
23	925SH01-12	2	MAIN BEARING (INNER BEARINGS)
24	925SH01-1	1	OUTER MAIN BEARING
25	925SH01-17	1	SPHERICAL BEARING
26	926SH01-1	4	SNAP RING , CRANKSHAFT
27	580PN048	3	TOP , LUBE COVER
28	480PN10	16	WASHER , MAIN BEARING RETAINER
29	922PN01	2	ROTARY UNION
30	901SH02-2	1	SEAL , FREE END SHAFT
31	901SH02-23	3	SEAL , PONY ROD

ITEM NO.	PART NO.	QTY.	DESCRIPTION
32	916VP005-130	3	HOSE , TEFLON
33	916VP005-180	4	HOSE , TEFLON
34	916VP015-240	1	HOSE , RUBBER
35	916VP015-360	1	HOSE , RUBBER
36	968VP001-004	7	HOSE ADAPTER , MALE CONNECTION
37	968VP001-018	2	HOSE ADAPTER , MALE CONNECTION
38	458PN01	12	NUT , FLANGED
39	454VP028-034	12	CAPSCREW , SOCKET HEAD 3/4 ~ 10 X 3-1/2" LONG
40	342-A-09	2	INSPECTION COVER , BACK
41	454VP028-014	18	CAPSCREW , SH , 3/4" ~ 10 UNC X 1-1/2" LONG
42	454VP024-006	24	CAPSCREW , SH , 5/16" ~ 18 UNC X 3/4" LONG
43	454VP003-006	64	CAPSCREW , HEX HEAD , 3/8" ~ 16 UNC X 3/4" LONG
44	454VP030-020	12	CAPSCREW , SOCKET HEAD 1" ~ 8 UNC X 2" LONG
45	971VP020-010	1	TEE , REDUCING 1 NPT X 1/2 NPT
46	971VP026-080	1	NIPPLE , 1" NPT X 8" LONG
47	971VP008-006	1	CROSS , 1" NPT
48	5090000000	AR	ZEP FAST GASKET (RED)
49	490PN17	1	CRANKSHAFT BEARING RETAINER
50	454VP003-006	18	CAPSCREW , HEX HEAD 3/8" ~ 16 UNC X 1" LONG
51	342-A-09A	1	INSPECTION COVER WITH INSIGNIA
52	458VP004-003	12	NEX NUT , HVY 3/8" ~ 16 UNC
53	971VP001-012	1	PIPE BUSHING , 1" NPT X 1/2" NPT
54	458VP005-006	18	FLEX LOCK NUT , 3/4" ~ 10 UNC
55	916PN010-130	1	HOSE , RUBBER
56	968VP003-016	3	HOSE ADAPTER #12 JIC X 90 DEGREE
57	454VP080-010	16	CAPSCREWS , SOCKET HEAD 1/2" ~ 13 UNC FLAT HEAD
58	565PN032	3	GASKET , INSPECTION COVER
59	971VP076-004	2	MALE RUN TEE , 1/2" NPT
60	971VP002-004	2	PIPE PLUG , 1/2" NPT
61	901SH05-640	1	OIL SUMP " O" RING
62	1000PN019	1	OIL SUMP , LUBE
63	1000PN022	1	MANIFOLD , LUBE
64	910PN01	1	BREATHER CAP
65	1000PN021	2	BRACKET , LUBE MANIFOLD

1000 H . P . POWER END
PART LIST
1000AD033

OFM PUMP , INC.	
<small>DRAWN</small> L. GORRELL 8/18/04 <small>MATERIAL :</small> PARTS LIST	1000 H . P . P . E . ASSEMBLY PART LIST
<small>APPROVED</small> C. FRY 8/18/04 <small>SCALE</small> 1 : 1	<small>SIZE</small> D <small>DWG NUMBER</small> 1000AD033-1 <small>REV</small> - <small>SHEET</small> 1 OF 1

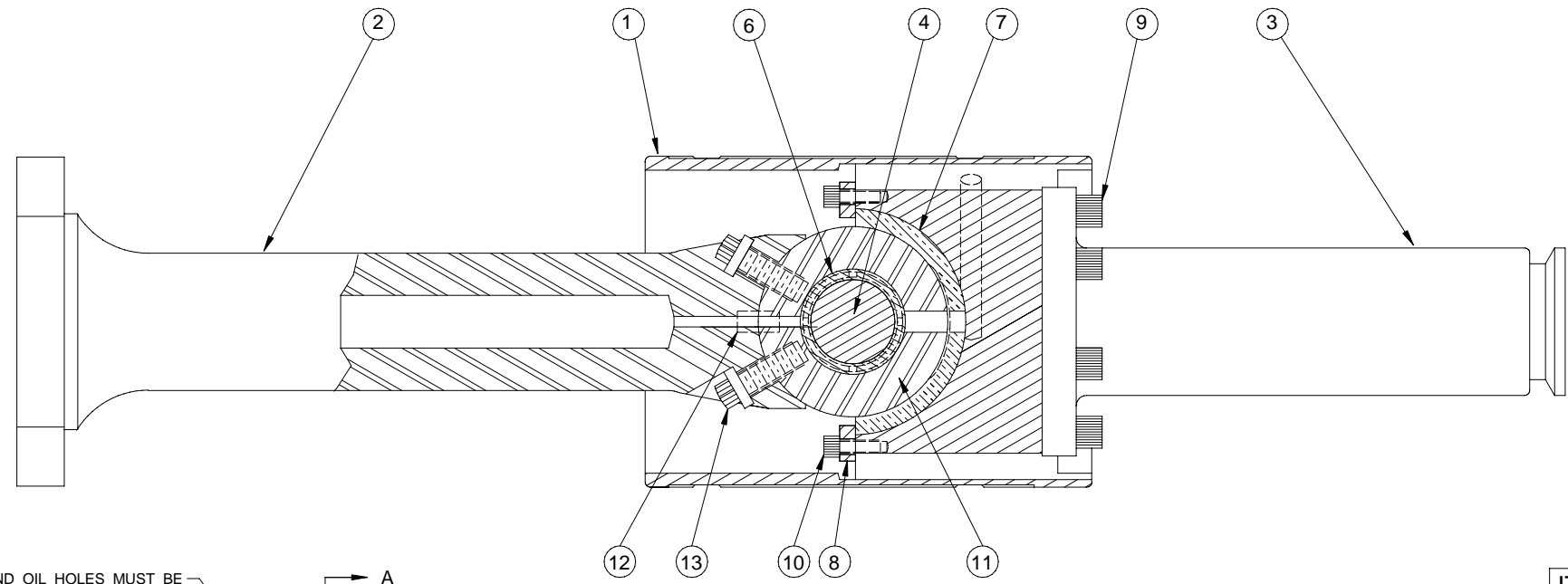


ITEM NO.	PART NO.	QTY.	DESCRIPTION
1	473PN12-1	1	CRANKSHAFT
2	444PN05	3	CONNECTING ROD BEARING HOUSING
3	550PN001-3	6	BOLT, BEARING RETAINER
4	917PN08-3	3	ROD BEARING, CAP HALF
5	917PN08-4	3	ROD BEARING, BASE HALF
6	925SH01-12	2	INNER MAIN BEARING
7	925SH01-1	1	OUTER MAIN BEARING
8	925SH01-17	1	SPHERICAL BEARING
9	441PN04	1	SPHERICAL BEARING HOUSING
10	926SH01-1	4	SNAP RING, CRANKSHAFT
11	458VP005-006	18	NUT, FLEXLOC 3/4" - 10
12	454VP028-034	12	CAPSCREW, SH, 3/4" - 10 UNC X 3-1/2" LONG
13	LOCTITE	AR	ONE DROP OF LOCTITE 262
14	634VP004-012	6	DOWELL PIN
15	450VP003-034	18	STUD, 3/4" - 10 UNC X 3-1/2" LONG

350 DG & 880 & 900 & 1000 HP CRANKSHAFT ASSEMBLY

81AD07 A

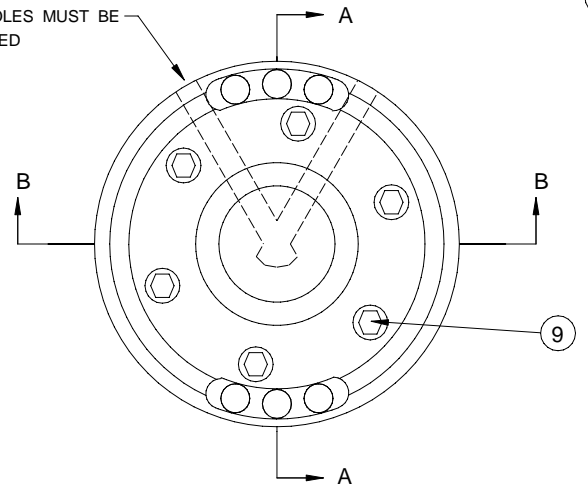
OFM PUMP, INC.	
<small>DRAWN</small> L. GORRELL 9/23/04 <small>MATERIAL</small> ASSEMBLY <small>DRAWING</small>	CRANKSHAFT ASSEMBLY FOR 350&900&1000 P.E.
<small>APPROVED</small> C. FRY 9/23/04 <small>SCALE</small> 1:2	<small>SIZE</small> E <small>DWG NUMBER</small> 81AD07A <small>REV</small> - <small>SHEET</small> 1 OF 1



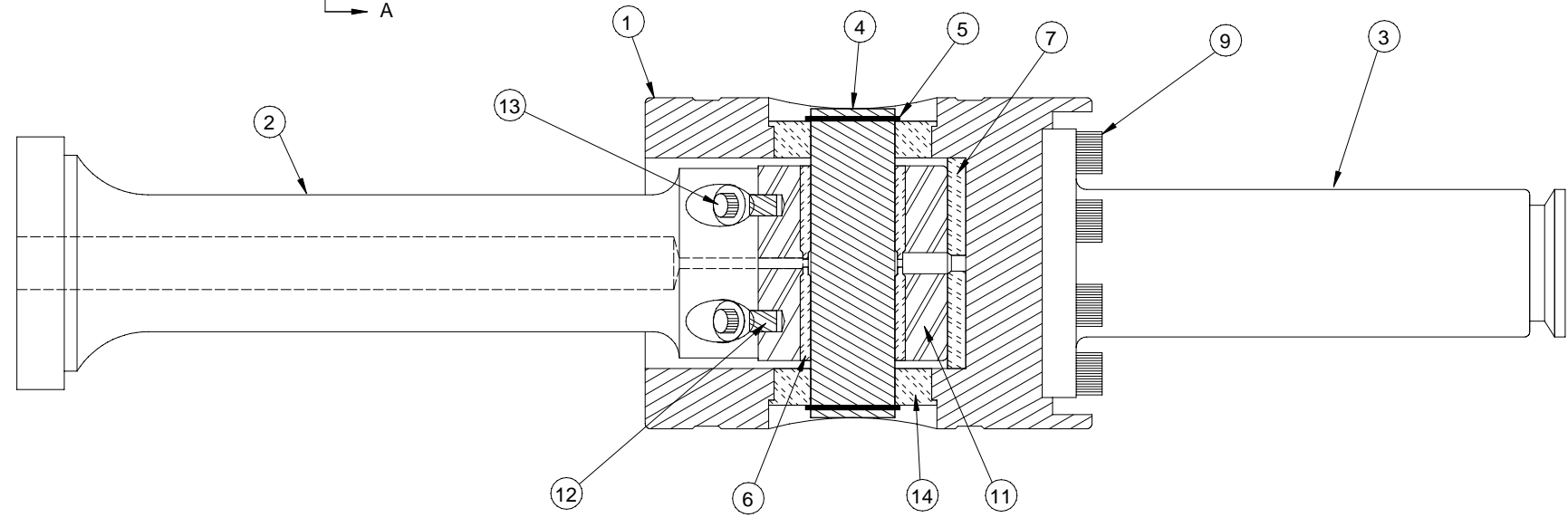
SECTION A - A

ITEM NO.	PART NO.	QTY.	DESCRIPTION
1	540PN07	1	CROSSHEAD
2	551PN07	1	CONNECTING ROD
3	286PN003	1	PONY ROD
4	630PN007	1	WRIST PIN
5	926SH01-11	2	SNAP RING
6	500-A-03	1	WRIST PIN BUSHING
7	917PN12	1	BRONZE THRUST SEAT
8	500-A-27-1	2	THRUST SEAT KEEPER
9	454VP028-014	6	CAPSCREW , DSH , 3/4" ~ 10 UNC X 1-1/2" LONG
10	454VP024-006	8	CAPSCREW , DSH , 5/16" ~18 UNC X 3/4" LONG
11	412PN06	1	PIVOT END
12	634VP007-010	2	DOWELL PIN , 1/2" X 1" LONG
13	454VP068-014	4	FERRY HEAD BOLT 5/8" X 1-5/8" LONG
14	917PN14	2	CROSSHEAD BUSHING

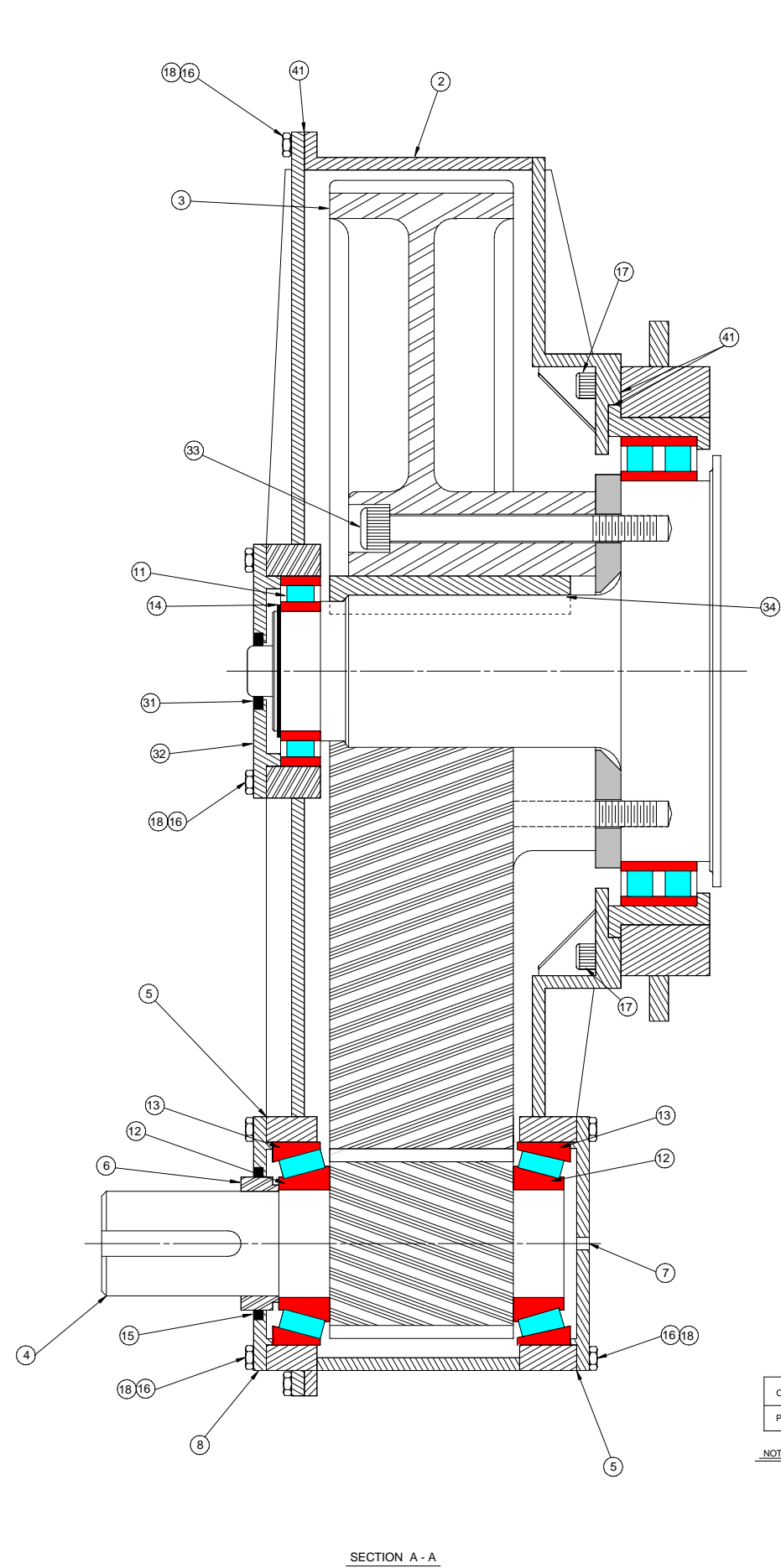
OIL GROOVE AND OIL HOLES MUST BE ON TOP WHEN INSTALLED



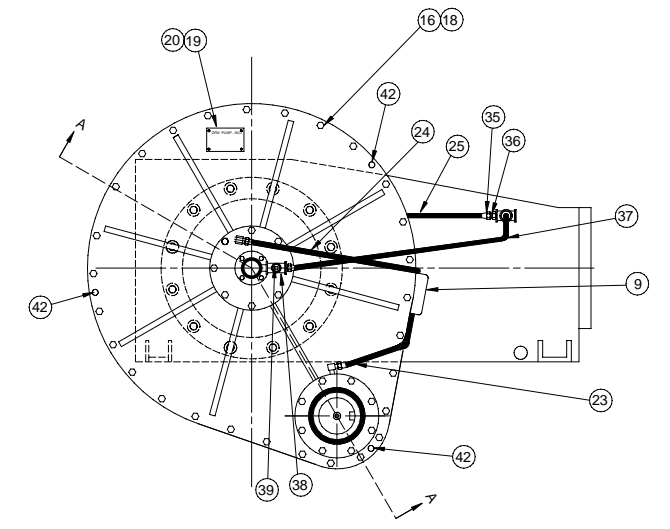
SECTION B - B



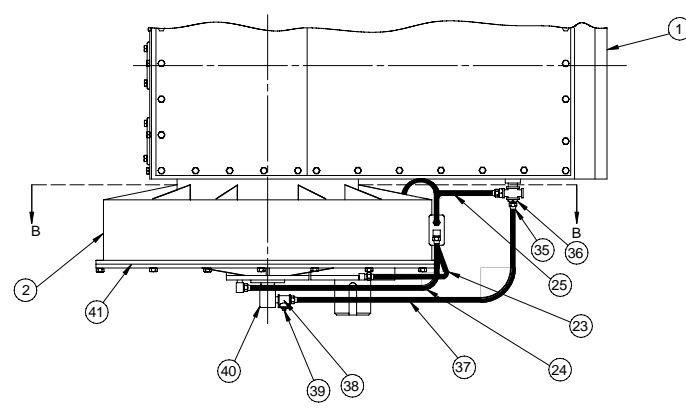
OFM PUMP, INC.	
<small>DRAWN</small> L. GORRELL 10/10/03 <small>CROSSHEAD ASSY FOR</small> OFM 900 H.P. & 350DG	OFM 1000 H.P. CROSSHEAD ASSY
<small>APPROVED</small> C. FRY 10/10/03	<small>SIZE</small> D
<small>SCALE</small> 1:2	<small>DWG NUMBER</small> 100AD03-1 <small>REV</small> - <small>SHEET</small> 1 OF 1



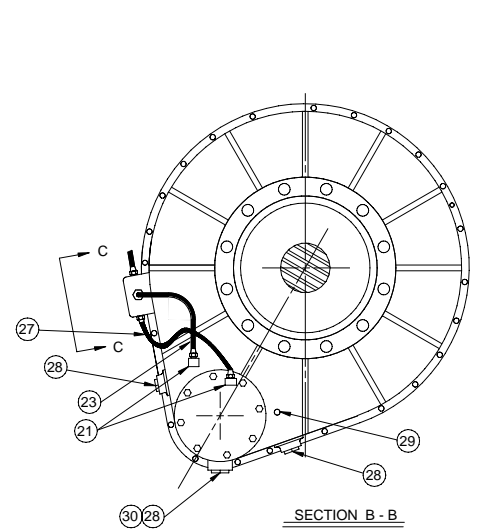
SECTION A - A



SECTION B - B



SECTION C - C



ITEM NO.	PART NO.	QTY.	DESCRIPTION
1	100AD33	1	POWER END
2	332PN35	1	GEAR BOX
3	556PN15	1	BULL GEAR, 6.353 : 1
4	557PN16	1	PINION SHAFT, 6.353 : 1
5	481PN17	1	PINION SHAFT SHIM SET
6	485PN11	1	PINION SHAFT SLEEVE
7	480PN18	1	RETAINER PINION BEARING
8	525PN10	1	PINION SEAL RETAINER
9	338PN03	1	LUBE MANIFOLD
--	--	N/A	-----
11	925SH01-22	1	BEARING, CYLINDRICAL ROLLER
12	930SH01-3	2	BEARING CONE
13	930SH01-4	2	BEARING CUP
14	926SH01-6	1	SNAP RING
15	901SH02-32	1	OIL SEAL
16	454VP004-010	52	CAPSCREW, HH, 1/2" - 13UNC X 1" LONG
17	454VP030-020	12	CAPSCREW, SH, 1" - 8 UNC X 2" LONG
18	452VP001-004	52	LOCKWASHER, 1/2"
19	919PN002	1	I.D. PLATE
20	454VP054-002	4	ROUND HEAD DRIVE SCREW NO. 4
21	968VP003-004	8	HOSE ADAPTER, 90° ELBOW
22	968VP001-017	1	HOSE ADAPTER, MALE CONNECTION
23	916PN008-220	1	HOSE, RUBBER
24	916PN008-290	1	HOSE, RUBBER
25	916PN008-180	1	HOSE, RUBBER
26	916CL001	1	HOSE, RUBBER (SEE CHART FOR PROPER SIZE)
27	916PN008-310	1	HOSE, RUBBER
28	971VP002-011	3	PIPE PLUG, 3" NPT
29	971VP002-002	2	PIPE PLUG, 1/4" NPT
30	971VP012-011	1	PIPE COUPLING, 3" NPT
31	901SH02-2	1	OIL SEAL
32	525PN11	1	SEAL RETAINER
33	454VP030-094	8	CAPSCREW, SH, 1" - 8 UNC X 9-1/2" LONG
34	631PN005-080	1	BULL GEAR KEY
35	968VP001-018	2	HOSE ADAPTER, MALE CONNECTION
36	971VP001-012	2	PIPE BUSHING
37	916PN015-360	1	HOSE, RUBBER
38	971VP015-004	1	PIPE TEE, 1/2" NPT
39	971VP002-004	1	PIPE PLUG, 1/2" NPT
40	922PN01	1	ROTARY UNION
41	509000000	AR	ZEP (FAST GASKET RED)
42	634VP007-010	3	DOWELL PIN

LUBRICATION HOSE CHART FOR ITEM NO. 26
SPEED REDUCER POSITION NO.

OPTION NO. 916QL001	#1, #13 #11, #15	#2, #24 #10, #16	#9, #9, #17 #23, #25, #26	#4, #8 #18, #22	#5, #6, #7 #19, #20, #21	#12 #14
PART NO. 916PN010 -	370	500	600	690	770	200

NOTE:
RIGHT HAND GEAR BOX MOUNT, POSITION # 23, SHOWN.
SEE GEAR BOX / POWER FRAME ASSEMBLY OPTIONS,
FOR ALL POSSIBLE GEAR BOX POSITIONS.

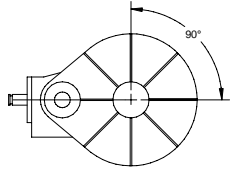
OFM PUMP, INC.

DRAWN: L. GORRELL 9/8/04
 MATERIAL: 1000 GEAR BOX ASSEMBLY
 APPROVED: C. FRY 9/8/04
 SCALE: 1 : 2

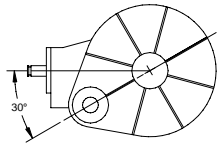
1000 H. P. GEAR BOX ASSEMBLY
 DWG NUMBER: 1000 H.P. GB
 REV: - SHEET 1 OF 1

ITEM NO.	PART NO.	QTY.	DESCRIPTION
1	1000AD33	1	POWER END
2	332PN35	1	GEAR BOX
3	556PN15	1	BULL GEAR , 6.353 : 1
4	557PN16	1	PINION SHAFT , 6.353 : 1
5	481PN17	1	PINION SHAFT SHIM SET
6	485PN11	1	PINION SHAFT SLEEVE
7	490PN18	1	RETAINER PINION BEARING
8	525PN10	1	PINION SEAL RETAINER
9	339PN03	1	LUBE MANIFOLD
—	— — —	N/A	— — — — — — — .
11	925SH01-22	1	BEARING , CYLINDRICAL ROLLER
12	930SH01-3	2	BEARING CONE
13	930SH01-4	2	BEARING CUP
14	926SH01-6	1	SNAP RING
15	901SH02-32	1	OIL SEAL
16	454VP004-010	52	CAPSCREW , HH , 1/2" ~ 13UNC X 1" LONG
17	454VP030-020	12	CAPSCREW , SH. , 1" ~ 8 UNC X 2" LONG
18	452VP001-004	52	LOCKWASHER , 1/2"
19	919PN002	1	I. D. PLATE
20	454VP054-002	4	ROUND HEAD DRIVE SCREW NO. 4
21	968VP003-004	8	HOSE ADAPTER , 90° ELBOW
22	968VP001-017	1	HOSE ADAPTER , MALE CONNECTION
23	916PN008-220	1	HOSE , RUBBER
24	916PN008-290	1	HOSE , RUBBER
25	916PN008-180	1	HOSE , RUBBER
26	916OL001	1	HOSE , RUBBER (SEE CHART FOR PROPER SIZE)
27	916PN008-310	1	HOSE , RUBBER
28	971VP002-011	3	PIPE PLUG , 3" NPT
29	971VP002-002	2	PIPE PLUG , 1/4" NPT
30	971VP012-011	1	PIPE COUPLING , 3" NPT
31	901SH02-2	1	OIL SEAL
32	525PN11	1	SEAL RETAINER
33	454VP030-094	8	CAPSCREW , SH. 1" ~ 8 UNC X 9-1/2" LONG
34	631PN005-080	1	BULL GEAR KEY
35	968VP001-018	2	HOSE ADAPTER , MALE CONNECTION
36	971VP001-012	2	PIPE BUSHING
37	916PN015-360	1	HOSE , RUBBER
38	971VP076-004	1	PIPE TEE , 1/2" NPT
39	971VP002-004	1	PIPE PLUG , 1/2" NPT
40	922PN01	1	ROTARY UNION
41	5090000000	AR	ZEP (FAST GASKET RED)
42	634VP007-010	3	DOWELL PIN

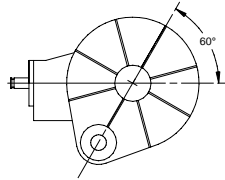
LEFT HAND MOUNT



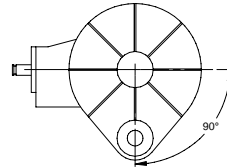
L. H. POSITION NO. 1



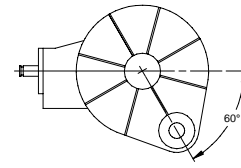
L. H. POSITION NO. 2



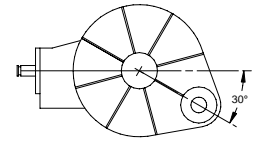
L. H. POSITION NO. 3



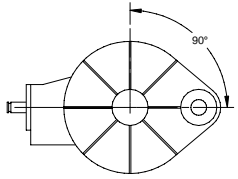
L. H. POSITION NO. 4



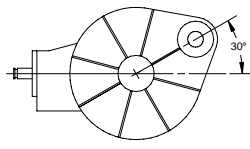
L. H. POSITION NO. 5



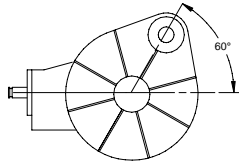
L. H. POSITION NO. 6



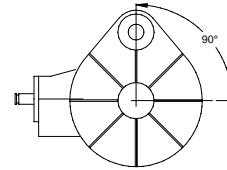
L. H. POSITION NO. 7



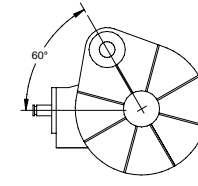
L. H. POSITION NO. 8



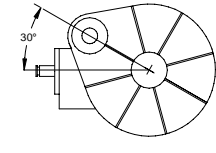
L. H. POSITION NO. 9



L. H. POSITION NO. 10

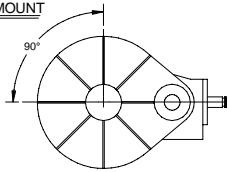


L. H. POSITION NO. 11

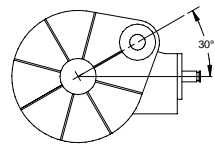


L. H. POSITION NO. 12

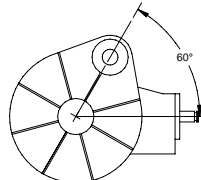
RIGHT HAND MOUNT



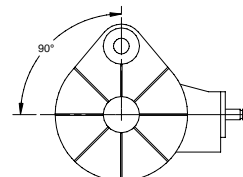
R. H. POSITION NO. 13



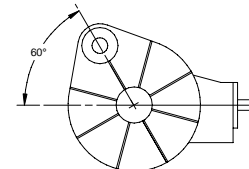
R. H. POSITION NO. 14



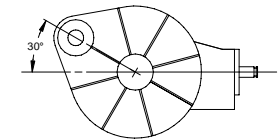
R. H. POSITION NO. 15



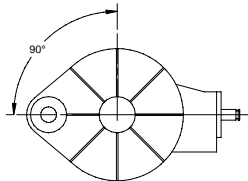
R. H. POSITION NO. 16



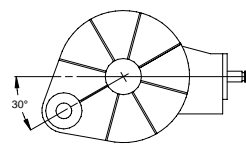
R. H. POSITION NO. 17



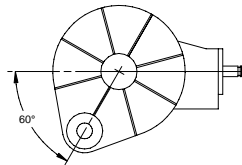
R. H. POSITION NO. 18



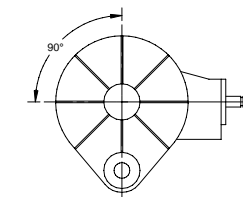
R. H. POSITION NO. 19



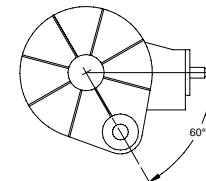
R. H. POSITION NO. 20



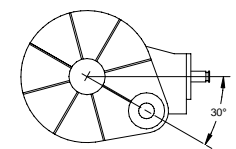
R. H. POSITION NO. 21



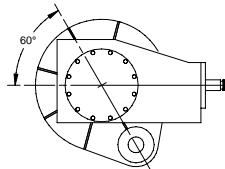
R. H. POSITION NO. 22



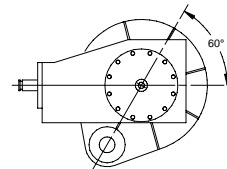
R. H. POSITION NO. 23



R. H. POSITION NO. 24



POSITION NO. 25
UNDERSIDE DRIVE



POSITION NO. 26
UNDERSIDE DRIVE

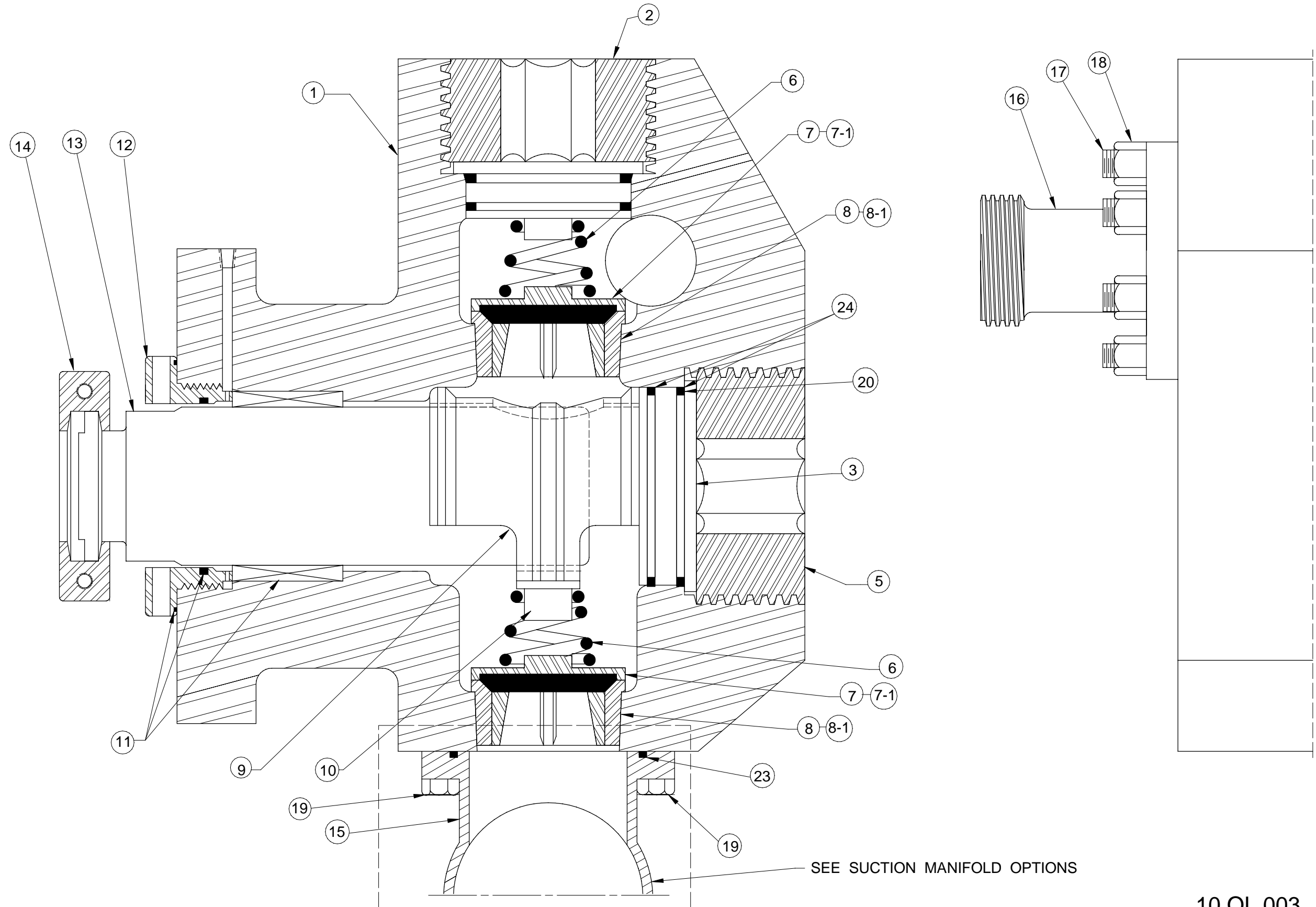
GEAR BOX / POWER FRAME
ASSEMBLY OPTIONS

OFM PUMP, INC.

DRAWN L. GORRELL 9/14/04	GEAR BOX & POWER FRAME ASSY. OPTIONS
MATERIAL ASSY. OPTION	
APPROVED C. FRY 9/14/04	SIZE D 1000 H.P. G. B. OPS.
SCALE 1 : 20	REV - SHEET 1 OF 1

1000 OFM FLUID END ASSEMBLY

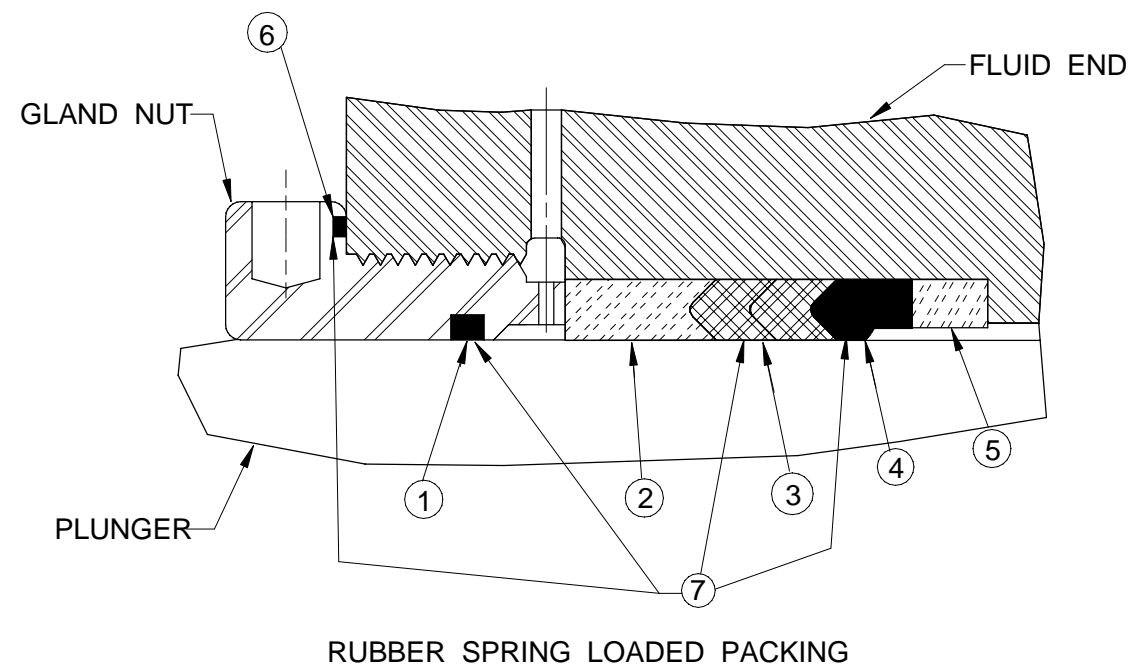
10 OL 003



SEE SUCTION MANIFOLD OPTIONS

ITEM NO.	PART NO.	QTY.	DESCRIPTION
1	19PN01	1	FLUID - CYLINDER BLOCK 3-1/2"
2	071OL005	REF	DISCHARGE COVER ASSY , SEE OPTION LIST
3	86PN09	3	SUCTION COVER
4	-----	----	
5	342-A-70	3	SUCTION RETAINER NUT
6	918PN01	6	VALVE SPRING
7	NF-4-V1	6	VALVE (WITH INSERT)
7-1	NF-4-I	---	VALVE INSERT (REPLACEMENT , 1 EACH VALVE)
8	NF-4-S1	6	VALVE SEAT
8-1	901SH05-153	6	VALVE SEAT " O " RING
9	131PN13	3	VALVE RETAINER CAGE
10	130PN07	3	VALVE SPRING RETAINER
11	208AD015	3	RUBBER SPRING LOADED PACKING ASSY.
12	182PN23	3	GLAND NUT
13	159PN002	3	PLUNGER , TYPE A , 16" LONG 3-1/2" DIA.
----	-----	--	
14	171PN03	3	PONY ROD TO PLUNGER CLAMP
15	117PN007	1	SUCTION MANIFOLD , 6" RUN WITH 10" CENTERS
16	265OL004	REF	DISCHARGE FLANGE , SEE OPTION LIST
17	450VP005-034	12	STUD , 1"~8UNC - 2A X 3-1/2" LONG
18	458VP012-008	12	1"~ 8 UNC - 2B , HEX HUT , HVY , GRADE 5
19	454VP007-014	12	7/8"~ 9 UNC - 2A X 1-1/2" , CAPSCREW, HEX HEAD
20	901PN017-003	3	SEAL , " O " RING BACK - UP
21	-----	---	
22	-----	---	
23	901SH05--258	3	SUCTION MANIFOLD " O " RING
24	901SH05-348	6	SUCTION COVER " O " RING
25	116PN008	1	SUCTION MANIFOLD , VALVE LIFTER COUPLING , 6" RUN 10" CENTERS (OPTION TO ITEM 15)
26	210AD01	3	SUCTION VALVE LIFTER ASSY. (FOR ABOVE MANIFOLD)

3-1/2" PLUNGER

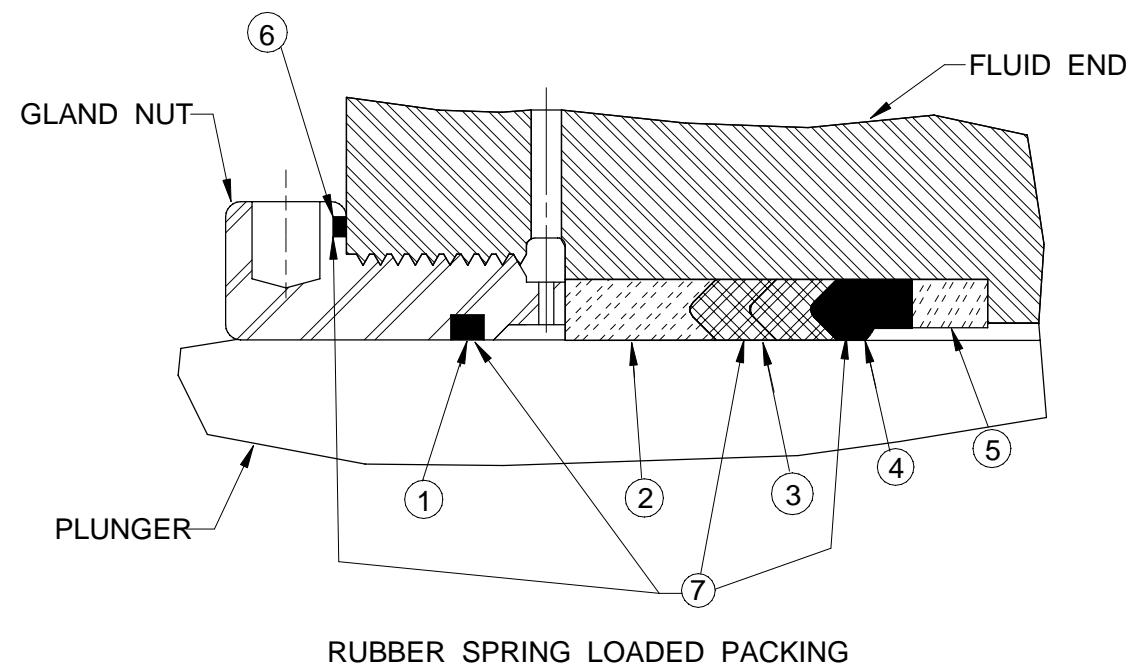


ITEM NO.	PART NO.	QTY.	DESCRIPTION
*****	208AD015		PACKING ASSEMBLY 3-1/2" X 4-1/2"
	INCLUDES		
1	901SH01-3	1	ROD WIPER
2	203PN001-007	1	PACKING ADAPTER , TOP
3	901VP002-012	2	SEAL , PRESSURE RING
4	901VP014-012	1	SEAL , HEADER RING
5	199PN001-003	1	PACKING ADAPTER , SPACER
6	901SH05-256	1	" O " RING
* 7	OFM1067-350SS450		PACKING SEAL SET 3-1/2" X 4-1/2"

OFM PUMP , INC.			
DRAWN LDG	9/09/02	3-1/2" PLUNGER FLUID END PARTS LIST	
APPROVED FCF	9/09/02	SIZE C	DWG NUMBER 900 - 3.500
SCALE 1 : 1	REV -	SHEET 1 OF 1	

ITEM NO.	PART NO.	QTY.	DESCRIPTION
1	19PN02	1	FLUID - CYLINDER BLOCK 3-3/4"
2	071OL005	REF	DISCHARGE COVER ASSY , SEE OPTION LIST
3	86PN03	3	SUCTION COVER
4	-----	----	
5	342-A-70	3	SUCTION RETAINER NUT
6	918PN01	6	VALVE SPRING
7	NF-4-V1	6	VALVE (WITH INSERT)
7-1	NF-4-I	---	VALVE INSERT (REPLACEMENT , 1 EACH VALVE)
8	NF-4-S1	6	VALVE SEAT
8-1	901SH05-153	6	VALVE SEAT " O " RING
9	131PN05	3	VALVE RETAINER CAGE
10	130PN07	3	VALVE SPRING RETAINER
11	208AD016	3	RUBBER SPRING LOADED PACKING ASSY.
12	182PN09	3	GLAND NUT
13	159PN001	3	PLUNGER , TYPE A , 16" LONG 3-3/4" DIA.
----	-----	---	
14	171PN03	3	PONY ROD TO PLUNGER CLAMP
15	117PN007	1	SUCTION MANIFOLD , 6" RUN WITH 10" CENTERS
16	265OL004	REF	DISCHARGE FLANGE , SEE OPTION LIST
17	450VP005-034	12	STUD , 1"~8UNC - 2A X 3-1/2" LONG
18	458VP012-008	12	1"~ 8 UNC - 2B , HEX HUT , HVY , GRADE 5
19	454VP007-014	12	7/8"~ 9 UNC - 2A X 1-1/2" , CAPSCREW, HEX HEAD
20	901PN017-005	3	SEAL , " O " RING BACK - UP
21	-----	---	
22	-----	---	
23	901SH05--258	3	SUCTION MANIFOLD " O " RING
24	901SH05-427	6	SUCTION COVER " O " RING
25	116PN008	1	SUCTION MANIFOLD , VALVE LIFTER COUPLING , 6" RUN 10" CENTERS (OPTION TO ITEM 15)
26	210AD01	3	SUCTION VALVE LIFTER ASSY. (FOR ABOVE MANIFOLD)

3-3/4" PLUNGER

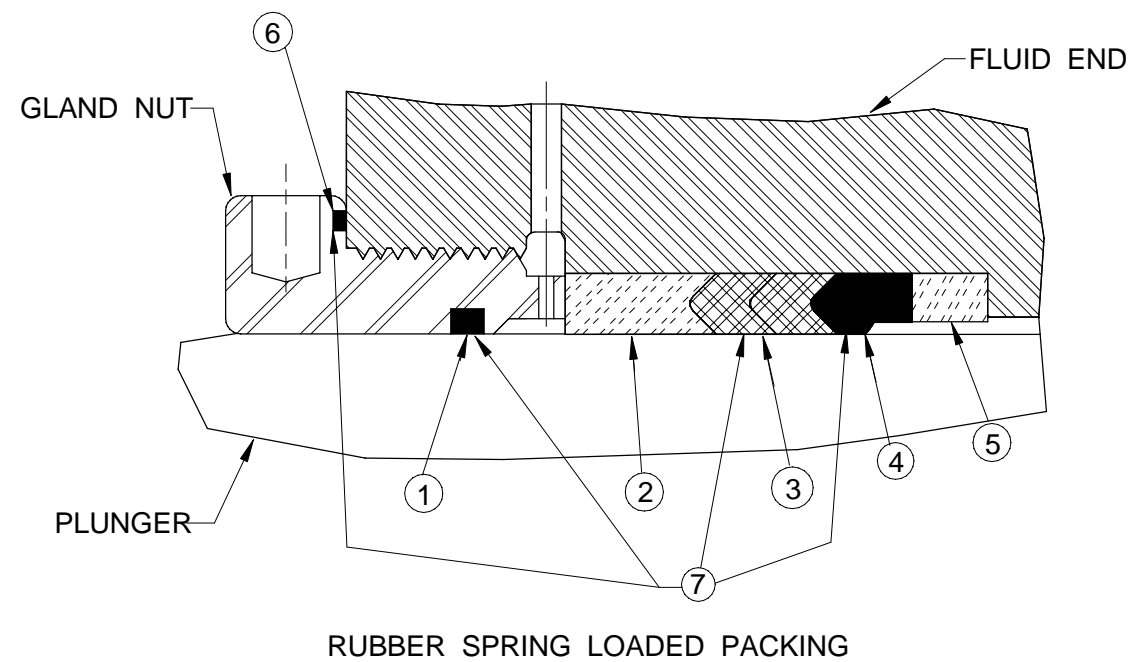


ITEM NO.	PART NO.	QTY.	DESCRIPTION
*****	208AD016		PACKING ASSEMBLY 3-3/4" X 4-3/4"
	INCLUDES		
1	901SH01-4	1	ROD WIPER
2	203PN001-002	1	PACKING ADAPTER , TOP
3	901VP002-004	2	SEAL , PRESSURE RING
4	901VP014-004	1	SEAL , HEADER RING
5	199PN001-004	1	PACKING ADAPTER , SPACER
6	901SH05-256	1	" O " RING
* 7	OFM1067-375SS475		PACKING SEAL SET 3-3/4" X 4-3/4"

OFM PUMP , INC.			
DRAWN LDG	9/09/02	3-3/4" PLUNGER FLUID END PARTS LIST	
APPROVED FCF	9/09/02	SIZE C	DWG NUMBER 900 - 3.750
SCALE 1 : 1	REV -	SHEET 1 OF 1	

ITEM NO.	PART NO.	QTY.	DESCRIPTION
1	19PN03	1	FLUID - CYLINDER BLOCK 4"
2	071OL005	REF	DISCHARGE COVER ASSY , SEE OPTION LIST
3	86PN03	3	SUCTION COVER
4	-----	----	
5	342-A-70	3	SUCTION RETAINER NUT
6	918PN01	6	VALVE SPRING
7	NF-4-V1	6	VALVE (WITH INSERT)
7-1	NF-4-I	---	VALVE INSERT (REPLACEMENT , 1 EACH VALVE)
8	NF-4-S1	6	VALVE SEAT
8-1	901SH05-153	6	VALVE SEAT " O " RING
9	131PN05	3	VALVE RETAINER CAGE
10	130PN07	3	VALVE SPRING RETAINER
11	208AD005	3	RUBBER SPRING LOADED PACKING ASSY.
12	182PN08	3	GLAND NUT
13	159PN009	3	PLUNGER , TYPE A , 16" LONG 4" DIA.
----	-----	---	
14	171PN03	3	PONY ROD TO PLUNGER CLAMP
15	117PN007	1	SUCTION MANIFOLD , 6" RUN WITH 10" CENTERS
16	265OL004	REF	DISCHARGE FLANGE , SEE OPTION LIST
17	450VP005-034	12	STUD , 1"~8UNC - 2A X 3-1/2" LONG
18	458VP012-008	12	1"~ 8 UNC - 2B , HEX HUT , HVY , GRADE 5
19	454VP007-014	12	7/8"~ 9 UNC - 2A X 1-1/2" , CAPSCREW, HEX HEAD
20	901PN017-005	3	SEAL , " O " RING BACK - UP
21	-----	---	
22	-----	---	
23	901SH05--258	3	SUCTION MANIFOLD " O " RING
24	901SH05-427	6	SUCTION COVER " O " RING
25	116PN008	1	SUCTION MANIFOLD , VALVE LIFTER COUPLING , 6" RUN 10" CENTERS (OPTION TO ITEM 15)
26	210AD01	3	SUCTION VALVE LIFTER ASSY. (FOR ABOVE MANIFOLD)

4" PLUNGER

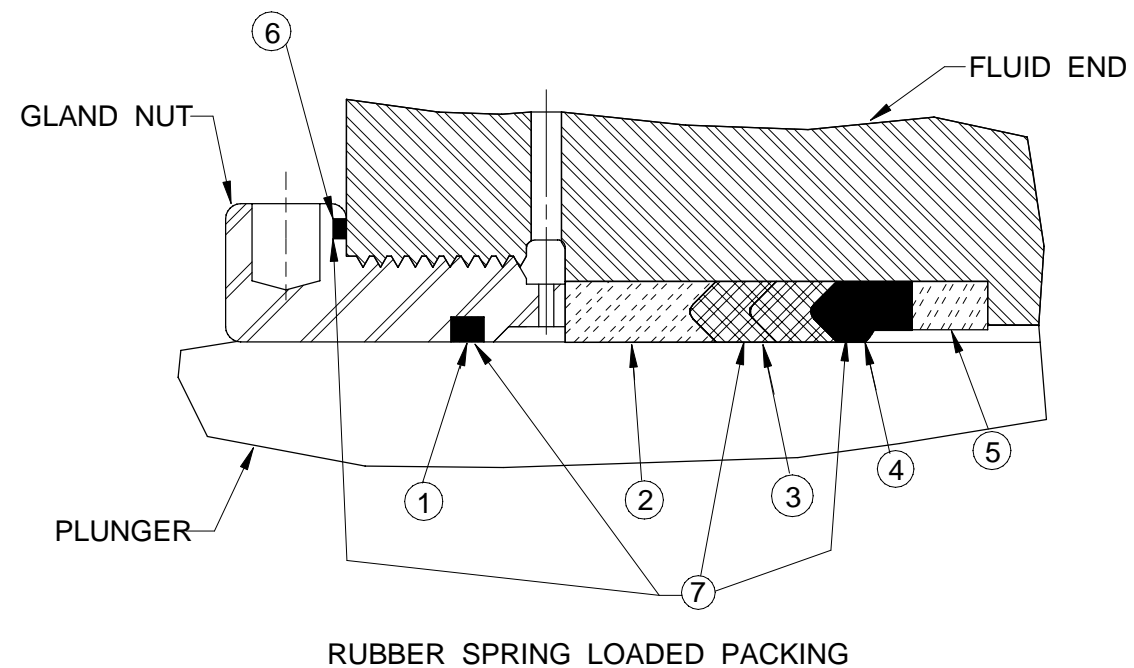


ITEM NO.	PART NO.	QTY.	DESCRIPTION
*****	208AD005		PACKING ASSEMBLY 4" X 5"
	INCLUDES		
1	901SH01-5	1	ROD WIPER
2	203PN001-003	1	PACKING ADAPTER , TOP
3	901VP002-005	2	SEAL , PRESSURE RING
4	901VP014-005	1	SEAL , HEADER RING
5	199PN001-005	1	PACKING ADAPTER , SPACER
6	901SH05-256	1	" O " RING
* 7	OFM1067-400SS500		PACKING SEAL SET 4" X 5"

OFM PUMP , INC.			
DRAWN LDG	9/09/02	4" PLUNGER FLUID END PARTS LIST	
APPROVED FCF	9/09/02	SIZE C	DWG NUMBER 900 - 4.000
SCALE 1 : 1	REV -	SHEET 1 OF 1	

ITEM NO.	PART NO.	QTY.	DESCRIPTION
1	19PN04	1	FLUID - CYLINDER BLOCK 4-1/2"
2	071OL003	REF	DISCHARGE COVER ASSY , SEE OPTION LIST
3	86PN01	3	SUCTION COVER
4	-----	----	
5	51PN02	3	SUCTION RETAINER NUT
6	918PN05	6	VALVE SPRING
7	NF-5-V1	6	VALVE (WITH INSERT)
7-1	NF-5-I	---	VALVE INSERT (REPLACEMENT , 1 EACH VALVE)
8	NF-5-S1	6	VALVE SEAT
8-1	901SH05-245	6	VALVE SEAT " O " RING
9	131PN02	3	VALVE RETAINER CAGE
10	130PN03	3	VALVE SPRING RETAINER
11	208AD017	3	RUBBER SPRING LOADED PACKING ASSY.
12	182PN02	3	GLAND NUT
13	159PN008	3	PLUNGER , TYPE A , 16" LONG 4-1/2" DIA.
----	-----	---	
14	171PN03	3	PONY ROD TO PLUNGER CLAMP
15	117PN007	1	SUCTION MANIFOLD , 6" RUN WITH 10" CENTERS
16	265OL004	REF	DISCHARGE FLANGE , SEE OPTION LIST
17	450VP005-034	12	STUD , 1"~8UNC - 2A X 3-1/2" LONG
18	458VP012-008	12	1"~ 8 UNC - 2B , HEX HUT , HVY , GRADE 5
19	454VP007-014	12	7/8"~ 9 UNC - 2A X 1-1/2" , CAPSCREW, HEX HEAD
20	901PN017-006	3	SEAL , " O " RING BACK - UP
21	-----	---	
22	-----	---	
23	901SH05--258	3	SUCTION MANIFOLD " O " RING
24	901SH05-432	6	SUCTION COVER " O " RING
25	116PN008	1	SUCTION MANIFOLD , VALVE LIFTER COUPLING , 6" RUN 10" CENTERS (OPTION TO ITEM 15)
26	210AD01	3	SUCTION VALVE LIFTER ASSY. (FOR ABOVE MANIFOLD)

4-1/2" PLUNGER

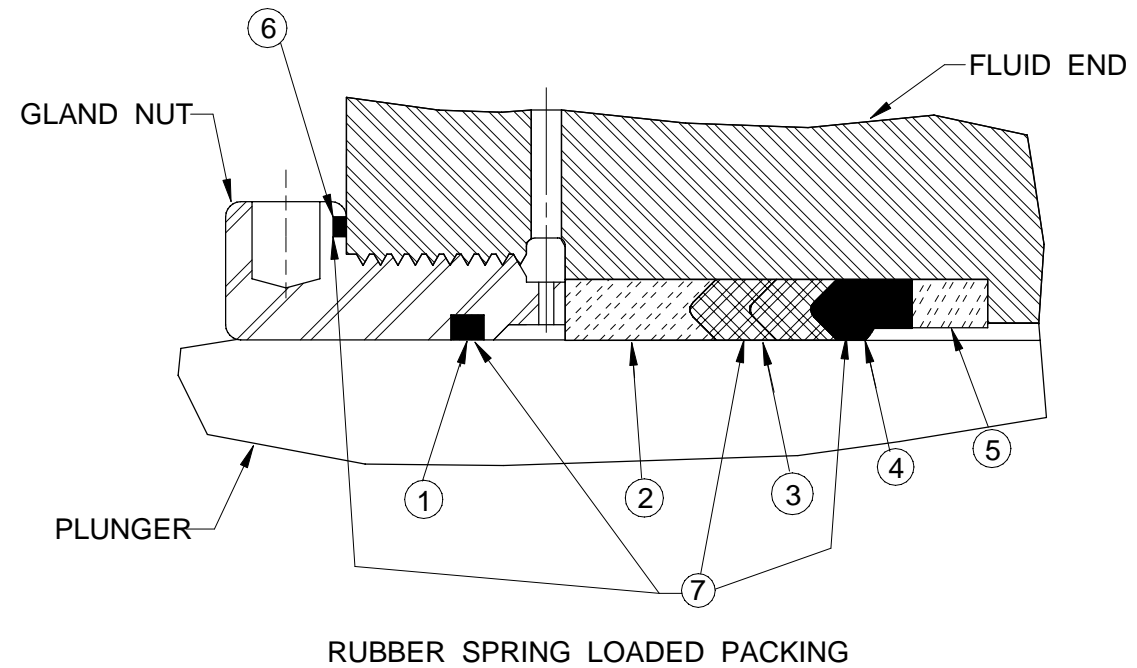


ITEM NO.	PART NO.	QTY.	DESCRIPTION
*****	208AD017		PACKING ASSEMBLY 4-1/2" X 5-1/2"
	INCLUDES		
1	901SH01-6	1	ROD WIPER
2	203PN001-005	1	PACKING ADAPTER , TOP
3	901VP002-014	2	SEAL , PRESSURE RING
4	901VP014-014	1	SEAL , HEADER RING
5	199PN001-006	1	PACKING ADAPTER , SPACER
6	901SH05-259	1	" O " RING
* 7	OFM1067-450SS550		PACKING SEAL SET 4-1/2" X 5-1/2"

OFM PUMP , INC.			
DRAWN LDG	9/09/02	4-1/2" PLUNGER FLUID END PARTS LIST	
APPROVED FCF	9/09/02	SIZE C	DWG NUMBER 900 - 4.500
SCALE 1 : 1	REV -	SHEET 1 OF 1	

ITEM NO.	PART NO.	QTY.	DESCRIPTION
1	19PN05	1	FLUID - CYLINDER BLOCK 5"
2	071OL004	REF	DISCHARGE COVER ASSY , SEE OPTION LIST
3	86PN08	3	SUCTION COVER
4	-----	----	
5	51PN03	3	SUCTION RETAINER NUT
6	918PN05	6	VALVE SPRING
7	NF-5-V1	6	VALVE (WITH INSERT)
7-1	NF-5-I	----	VALVE INSERT (REPLACEMENT , 1 EACH VALVE)
8	NF-5-S1	6	VALVE SEAT
8-1	901SH05-245	6	VALVE SEAT " O " RING
9	131PN10	3	VALVE RETAINER CAGE
10	130PN03	3	VALVE SPRING RETAINER
11	208AD009	3	RUBBER SPRING LOADED PACKING ASSY.
12	182PN18	3	GLAND NUT
13	159PN004	3	PLUNGER , TYPE A , 16" LONG 5" DIA.
----	-----	---	
14	171PN03	3	PONY ROD TO PLUNGER CLAMP
15	117PN007	1	SUCTION MANIFOLD , 6" RUN WITH 10" CENTERS
16	265OL004	REF	DISCHARGE FLANGE , SEE OPTION LIST
17	450VP005-034	12	STUD , 1"~8UNC - 2A X 3-1/2" LONG
18	458VP012-008	12	1"~ 8 UNC - 2B , HEX HUT , HVY , GRADE 5
19	454VP007-014	12	7/8"~ 9 UNC - 2A X 1-1/2" , CAPSCREW, HEX HEAD
20	901PN017-007	3	SEAL , " O " RING BACK - UP
21	-----	----	
22	-----	----	
23	901SH05--258	3	SUCTION MANIFOLD " O " RING
24	901SH05-435	6	SUCTION COVER " O " RING
25	116PN008	1	SUCTION MANIFOLD , VALVE LIFTER COUPLING , 6" RUN 12" CENTERS (OPTION TO ITEM 15)
26	210AD01	3	SUCTION VALVE LIFTER ASSY. (FOR ABOVE MANIFOLD)

5" PLUNGER

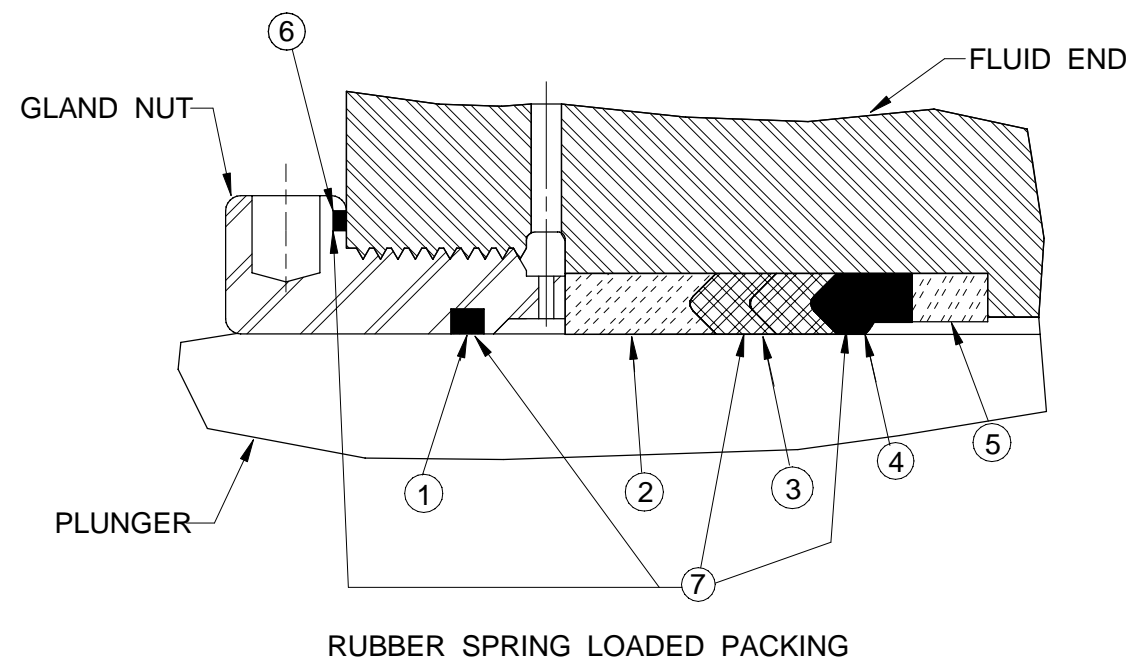


ITEM NO.	PART NO.	QTY.	DESCRIPTION
*****	208AD009		PACKING ASSEMBLY 5" X 6"
	INCLUDES		
1	901SH01-7	1	ROD WIPER
2	203PN001-006	1	PACKING ADAPTER , TOP
3	901VP002-009	2	SEAL , PRESSURE RING
4	901VP014-009	1	SEAL , HEADER RING
5	199PN001-007	1	PACKING ADAPTER , SPACER
6	901SH05-261	1	" O " RING
* 7	OFM1067-500SS600		PACKING SEAL SET 5" X 6"

OFM PUMP , INC.			
DRAWN LDG	9/09/02	5" PLUNGER FLUID END PARTS LIST	
APPROVED FCF	9/09/02	SIZE C	DWG NUMBER 1000 - 5.000
SCALE 1 : 1	REV -	SHEET 1 OF 1	

ITEM NO.	PART NO.	QTY.	DESCRIPTION
1	19PN06	1	FLUID - CYLINDER BLOCK 5-1/2"
2	070OL002	REF	DISCHARGE COVER ASSY , SEE OPTION LIST
3	85PN05	3	SUCTION COVER
4	-----	----	
5	342-A-34	3	SUCTION RETAINER NUT
6	918PN13	6	VALVE SPRING
7	NF-6-V1	6	VALVE (WITH INSERT)
7-1	NF-6-I	---	VALVE INSERT (REPLACEMENT , 1 EACH VALVE)
8	NF-6-S3	6	VALVE SEAT
8-1	901SH05-248	6	VALVE SEAT " O " RING
9	131PN09	3	VALVE RETAINER CAGE
10	130PN10	3	VALVE SPRING RETAINER
11	208AD007	3	RUBBER SPRING LOADED PACKING ASSY.
12	182PN16	3	GLAND NUT
13	159PN005	3	PLUNGER , TYPE A , 16" LONG 5-1/2" DIA.
----	-----	---	
14	171PN03	3	PONY ROD TO PLUNGER CLAMP
15	117PN007	1	SUCTION MANIFOLD , 6" RUN WITH 12" CENTERS
16	265OL005	REF	DISCHARGE FLANGE , SEE OPTION LIST
17	450VP005-034	12	STUD , 1"~8UNC - 2A X 3-1/2" LONG
18	458VP012-008	12	1"~ 8 UNC - 2B , HEX HUT , HVY , GRADE 5
19	454VP007-014	12	7/8"~ 9 UNC - 2A X 1-1/2" , CAPSCREW, HEX HEAD
20	NOT USED	3	SEAL , " O " RING BACK - UP
21	-----	---	
22	-----	---	
23	901SH05--258	3	SUCTION MANIFOLD " O " RING
24	901SH05-438	6	SUCTION COVER " O " RING
25	116PN008	1	SUCTION MANIFOLD , VALVE LIFTER COUPLING , 6" RUN 10" CENTERS (OPTION TO ITEM 15)
26	210AD01	3	SUCTION VALVE LIFTER ASSY. (FOR ABOVE MANIFOLD)

5-1/2" PLUNGER

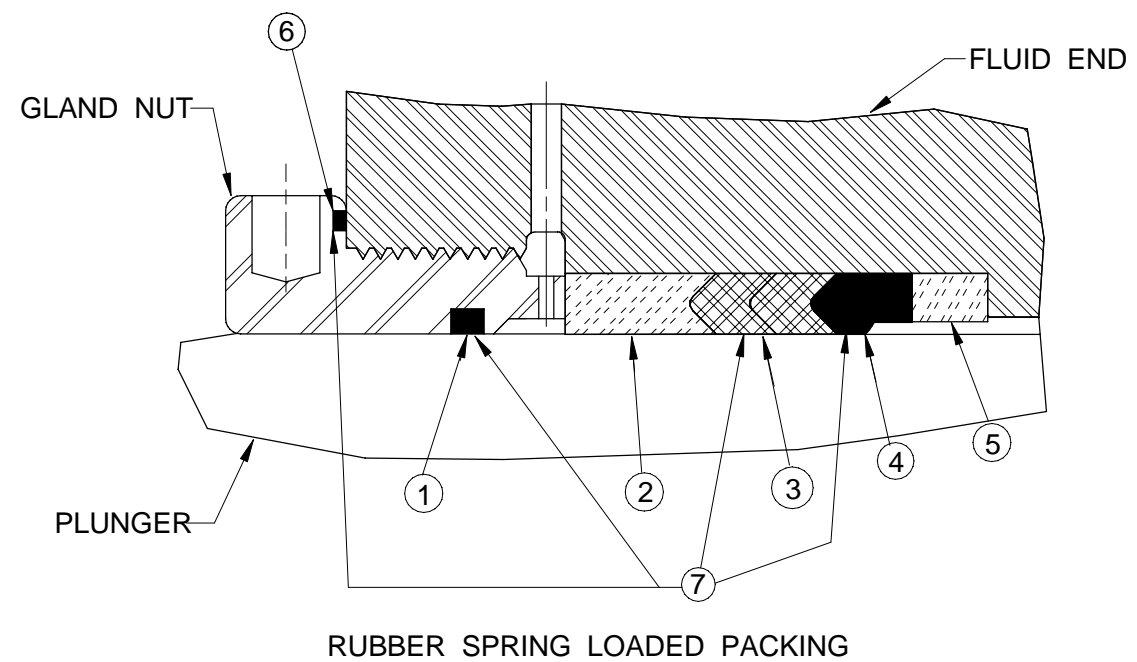


ITEM NO.	PART NO.	QTY.	DESCRIPTION
*****	208AD007		PACKING ASSEMBLY 5-1/2" X 6-1/2"
	INCLUDES		
1	901SH01-11	1	ROD WIPER
2	203PN001-012	1	PACKING ADAPTER , TOP
3	901VP002-008	2	SEAL , PRESSURE RING
4	901VP014-008	1	SEAL , HEADER RING
5	199PN001-008	1	PACKING ADAPTER , SPACER
6	901SH05-263	1	" O " RING
* 7	OFM1067-550SS650		PACKING SEAL SET 5-1/2" X 6-1/2"

OFM PUMP , INC.			
DRAWN LDG	9/09/02	5-1/2" PLUNGER FLUID END PARTS LIST	
APPROVED FCF	9/09/02	SIZE C	DWG NUMBER 900 - 5.500
SCALE 1 : 1	REV -	SHEET 1 OF 1	

ITEM NO.	PART NO.	QTY.	DESCRIPTION
1	19PN07	1	FLUID - CYLINDER BLOCK 5-3/4"
2	070OL002	REF	DISCHARGE COVER ASSY , SEE OPTION LIST
3	86PN07	3	SUCTION COVER
4	-----	----	
5	50PN12	3	SUCTION RETAINER NUT
6	918PN13	6	VALVE SPRING
7	NF-6-V1	6	VALVE (WITH INSERT)
7-1	NF-6-I	---	VALVE INSERT (REPLACEMENT , 1 EACH VALVE)
8	NF-6-S3	6	VALVE SEAT
8-1	901SH05-248	6	VALVE SEAT " O " RING
9	131PN08	3	VALVE RETAINER CAGE
10	130PN10	3	VALVE SPRING RETAINER
11	208AD006	3	RUBBER SPRING LOADED PACKING ASSY.
12	182PN15	3	GLAND NUT
13	159PN006	3	PLUNGER , TYPE A , 16" LONG 5-3/4" DIA.
----	-----	---	
14	171PN03	3	PONY ROD TO PLUNGER CLAMP
15	117PN007	1	SUCTION MANIFOLD , 6" RUN WITH 10" CENTERS
16	265OL005	REF	DISCHARGE FLANGE , SEE OPTION LIST
17	450VP005-034	12	STUD , 1"~8UNC - 2A X 3-1/2" LONG
18	458VP012-008	12	1"~ 8 UNC - 2B , HEX HUT , HVY , GRADE 5
19	454VP007-014	12	7/8"~ 9 UNC - 2A X 1-1/2" , CAPSCREW, HEX HEAD
20	NOT USED	3	SEAL , " O " RING BACK - UP
21	-----	---	
22	-----	---	
23	901SH05--258	3	SUCTION MANIFOLD " O " RING
24	901SH05-440	6	SUCTION COVER " O " RING
25	116PN008	1	SUCTION MANIFOLD , VALVE LIFTER COUPLING , 6" RUN 10" CENTERS (OPTION TO ITEM 15)
26	210AD01	3	SUCTION VALVE LIFTER ASSY. (FOR ABOVE MANIFOLD)

5-3/4" PLUNGER

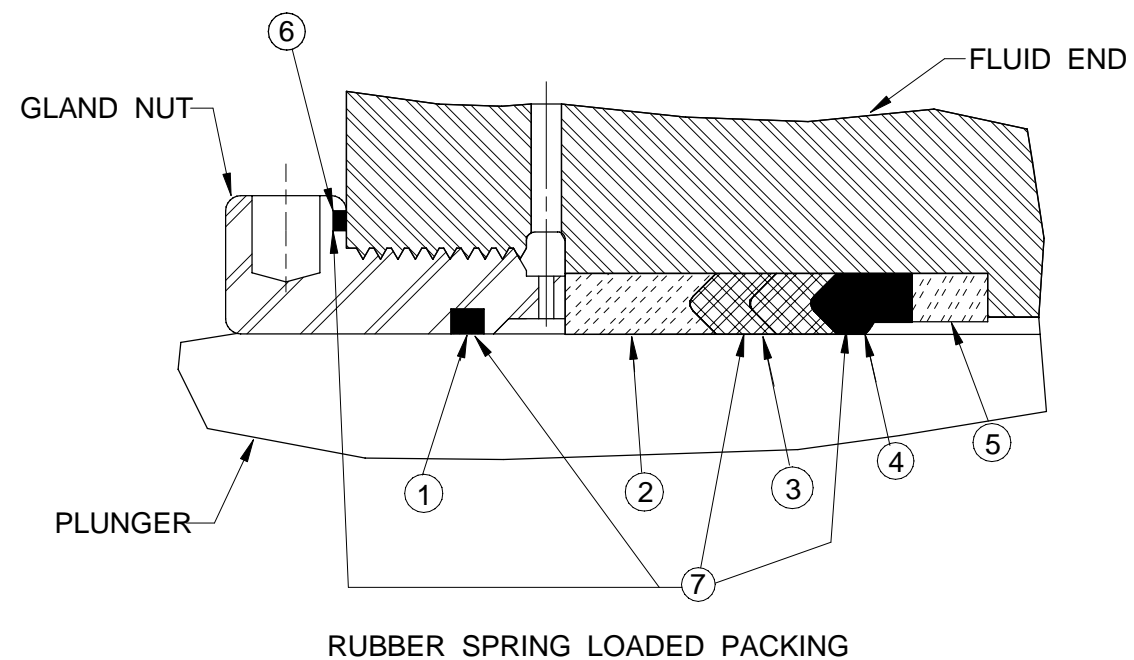


ITEM NO.	PART NO.	QTY.	DESCRIPTION
*****	208AD006		PACKING ASSEMBLY 5-3/4" X 6-3/4"
	INCLUDES		
1	901SH01-9	1	ROD WIPER
2	203PN001-010	1	PACKING ADAPTER , TOP
3	901VP002-006	2	SEAL , PRESSURE RING
4	901VP014-006	1	SEAL , HEADER RING
5	199PN001-009	1	PACKING ADAPTER , SPACER
6	901SH05-265	1	" O " RING
* 7	OFM1067-575SS675		PACKING SEAL SET 5-3/4" X 6-3/4"

OFM PUMP , INC.			
DRAWN LDG	9/09/02	5-3/4" PLUNGER FLUID END PARTS LIST	
APPROVED FCF	9/09/02	SIZE C	DWG NUMBER 900 - 5.750
SCALE 1 : 1	REV -	SHEET 1 OF 1	

ITEM NO.	PART NO.	QTY.	DESCRIPTION
1	19PN08	1	FLUID - CYLINDER BLOCK 6"
2	070OL002	REF	DISCHARGE COVER ASSY , SEE OPTION LIST
3	86PN07	3	SUCTION COVER
4	-----	----	
5	50PN12	3	SUCTION RETAINER NUT
6	918PN13	6	VALVE SPRING
7	NF-6-V1	6	VALVE (WITH INSERT)
7-1	NF-6-I	---	VALVE INSERT (REPLACEMENT , 1 EACH VALVE)
8	NF-6-S3	6	VALVE SEAT
8-1	901SH05-248	6	VALVE SEAT " O " RING
9	131PN08	3	VALVE RETAINER CAGE
10	130PN10	3	VALVE SPRING RETAINER
11	208AD008	3	RUBBER SPRING LOADED PACKING ASSY.
12	182PN17	3	GLAND NUT
13	159PN007	3	PLUNGER , TYPE A , 16" LONG 6" DIA.
----	-----	---	
14	171PN03	3	PONY ROD TO PLUNGER CLAMP
15	117PN007	1	SUCTION MANIFOLD , 6" RUN WITH 10" CENTERS
16	265OL005	REF	DISCHARGE FLANGE , SEE OPTION LIST
17	450VP005-034	12	STUD , 1"~8UNC - 2A X 3-1/2" LONG
18	458VP012-008	12	1"~ 8 UNC - 2B , HEX HUT , HVY , GRADE 5
19	454VP007-014	12	7/8"~ 9 UNC - 2A X 1-1/2" , CAPSCREW, HEX HEAD
20	NOT USED	3	SEAL , " O " RING BACK - UP
21	-----	---	
22	-----	---	
23	901SH05--258	3	SUCTION MANIFOLD " O " RING
24	901SH05-440	6	SUCTION COVER " O " RING
25	116PN008	1	SUCTION MANIFOLD , VALVE LIFTER COUPLING , 6" RUN 10" CENTERS (OPTION TO ITEM 15)
26	210AD01	3	SUCTION VALVE LIFTER ASSY. (FOR ABOVE MANIFOLD)

6" PLUNGER

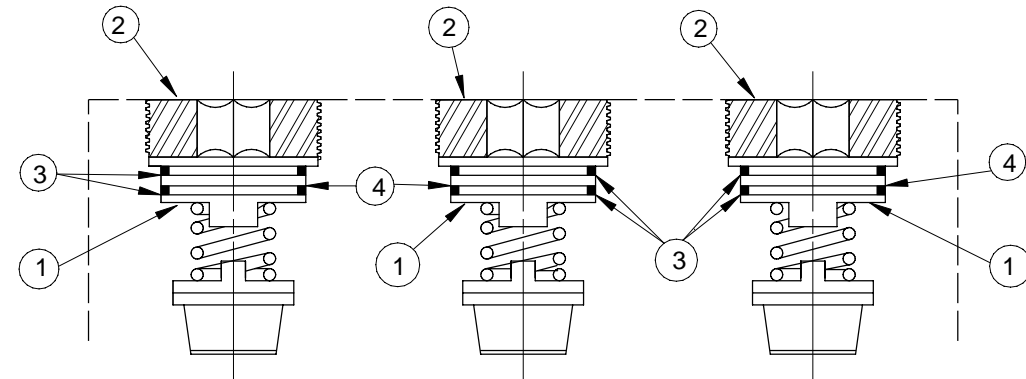


ITEM NO.	PART NO.	QTY.	DESCRIPTION
*****	208AD008		PACKING ASSEMBLY 6" X 7"
	INCLUDES		
1	901SH01-10	1	ROD WIPER
2	203PN001-011	1	PACKING ADAPTER , TOP
3	901VP002-007	2	SEAL , PRESSURE RING
4	901VP014-007	1	SEAL , HEADER RING
5	199PN001-010	1	PACKING ADAPTER , SPACER
6	901SH05-265	1	" O " RING
* 7	OFM1067-600SS700		PACKING SEAL SET 6" X 7"

OFM PUMP , INC.			
DRAWN LDG	9/09/02	6" PLUNGER FLUID END PARTS LIST	
APPROVED FCF	9/09/02	SIZE C	DWG NUMBER 900 - 6.000
SCALE 1 : 1	REV -	SHEET 1 OF 1	

DISCHARGE COVER ASSEMBLY - HIGH PRESSURE

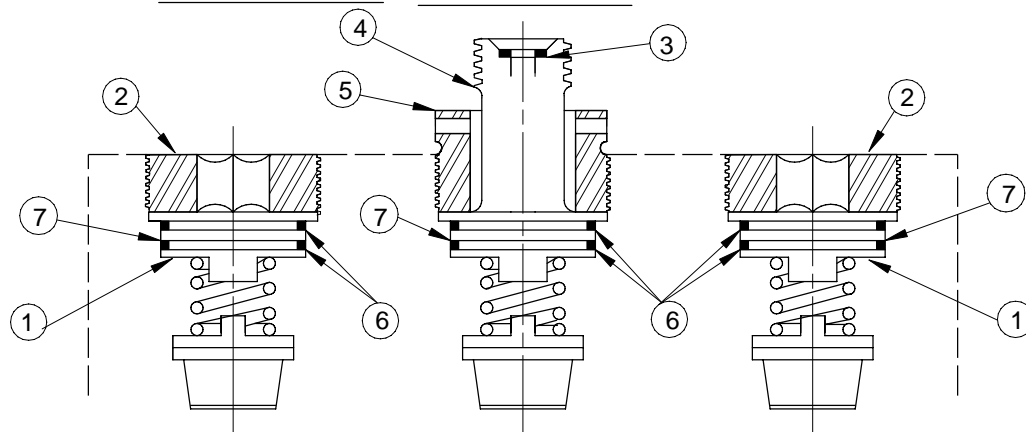
071AD002



ITEM NO.	PART NO.	QTY.	DESCRIPTION
1	71PN03	3	DISCHARGE COVER
2	342-A-70	3	DISCHARGE RETAINER NUT, INTERNAL HEX
3	901SH05-425	6	" O " RING
4	901PN017-004	3	SEAL, " O " RING BACK UP

DISCHARGE COVER ASSEMBLY W/ GAUGE CONNECTION

(- 1) 073AD009 (- 2) 073AD002 - HIGH PRESSURE



ITEM NO.	PART NO.	QTY.	DESCRIPTION
1	71PN03	2	DISCHARGE COVER
2	342-A-70	2	DISCHARGE RETAINER NUT, INTERNAL HEX
3-1	901SH06-4	1	SEAL RING, 2" 2002
-2	901SH06-1	1	SEAL RING, 2" 1002 / 1502
4-1	73PN002	1	DISCHARGE COVER, GAUGE CONNECTION, 2" 2002
-2	72PN004	1	DISCHARGE COVER, GAUGE CONNECTION, 2" 1502
5	342-A-28	1	RETAINER NUT, GAUGE CONNECTION
6	901SH05-425	6	" O " RING
7	901PN017-004	3	SEAL, " O " RING BACK UP

1000 H. P. DISCHARGE COVER OPTION

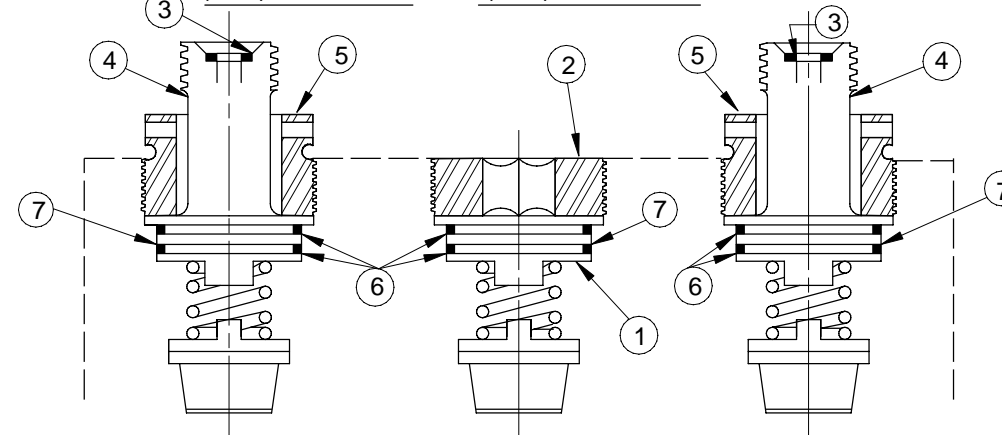
071 OL 005

* NOTE ;

THIS OPTION FOR USE WITH
3-1/2" , 3-3/4" & 4" INCH FLUID ENDS.

DISCHARGE COVER ASSEMBLY, GAUGE CONNECTION

(- 1) 073AD010 (- 2) 073AD006 HIGH PRESSURE



ITEM NO.	PART NO.	QTY.	DESCRIPTION
1	71PN03	1	DISCHARGE COVER
2	342-A-70	1	DISCHARGE RETAINER NUT, INTERNAL HEX
3-1	901SH06-4	2	SEAL RING, 2" 2002
-2	901SH06-1	2	SEAL, RING 2" 1002 / 1502
4-1	73PN002	2	DISCHARGE COVER, GAUGE CONNECTION 2" 2002
-2	72PN004	2	DISCHARGE COVER, GAUGE CONNECTION 2" 1502
5	342-A-28	2	RETAINER NUT, GAUGE CONNECTION
6	901SH05-425	6	" O " RING
7	901PN017-004	3	SEAL, " O " RING BACK UP

OFM PUMP, INC.

DRAWN
LDG 9/16/02
OPTIONS FOR
3-1/2" INCH
FLUID ENDS
APPROVED
FCF 9/16/02
SCALE 1 : 5

1000 H. P.
DISCH. COVER
OPTION

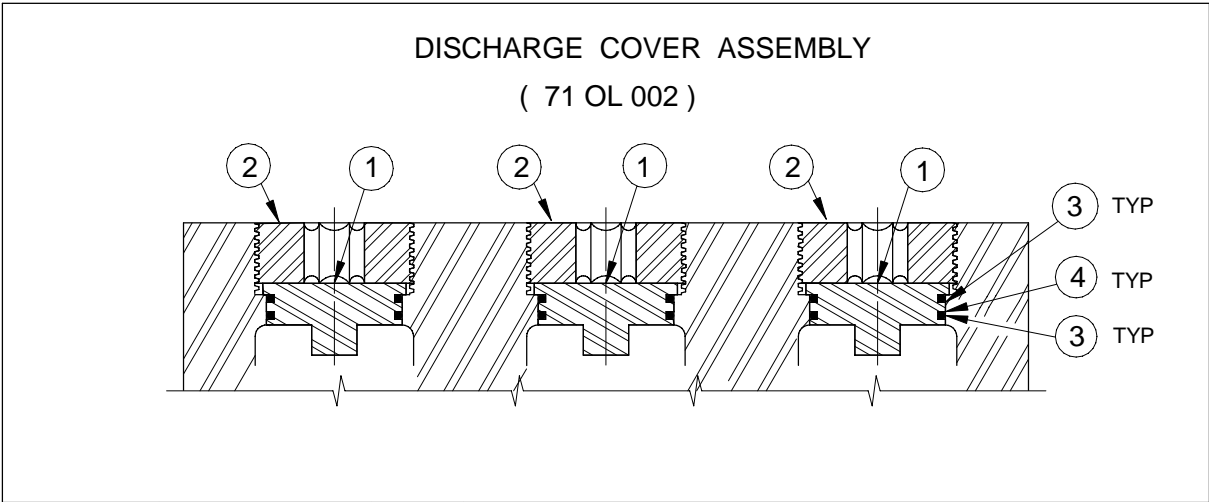
SIZE DWG NUMBER
C 071OL005

REV - SHEET 1 OF 1

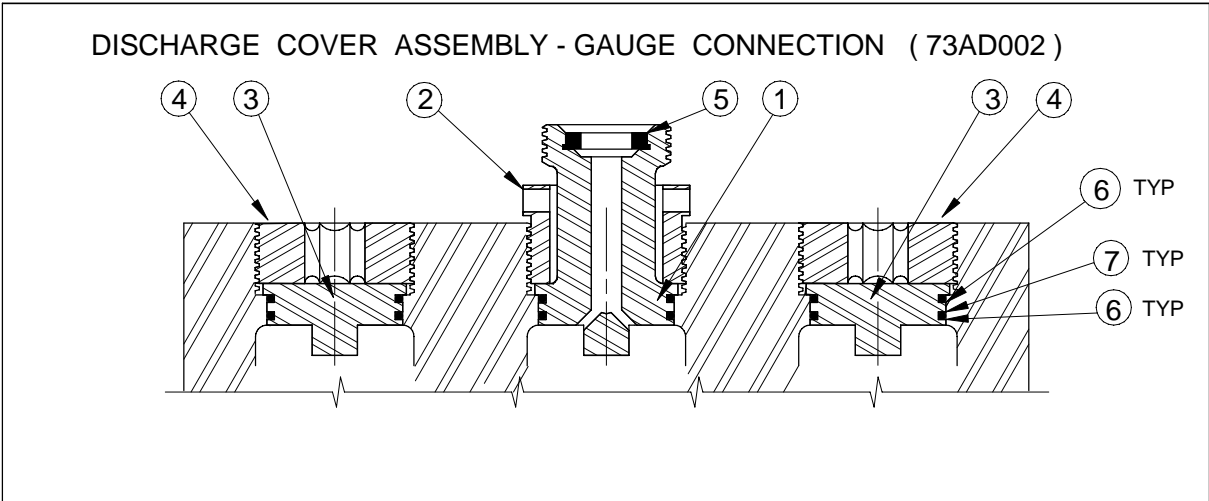
DISCHARGE COVER OPTION (71 OL 002)

NOTE ;

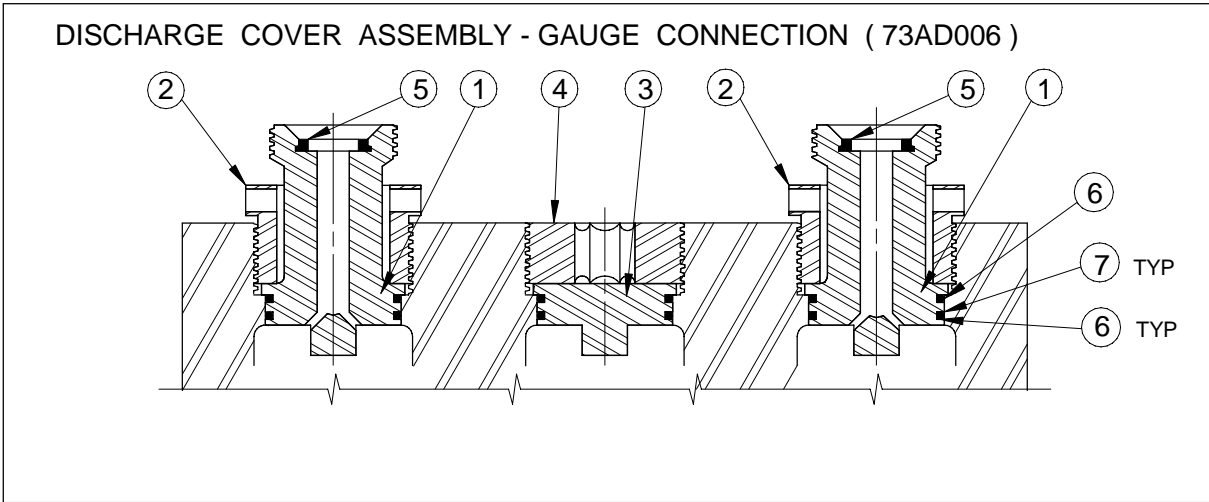
THESE OPTION FOR USE WITH
3-1/2" & 4" FLUID END



ITEM NO.	PART NO.	QTY.	DESCRIPTION
1	71PN03	3	DISCHARGE COVER
2	342-A-70	3	DISCHARGE COVER RETAINER NUT
3	901SH05-425	6	" O " RING
4	901PN017-004	3	SEAL , " O " RING , BACK - UP , PARBACK



ITEM NO.	PART NO.	QTY.	DESCRIPTION
1	73PN04	1	DISCHARGE COVER , WITH GAUGE CONNECTION
2	342-A-28	1	RETAINER NUT , GAUGE CONNECTION
3	71PN03	2	DISCHARGE COVER
4	342-A-70	2	DISCHARGE COVER , RETAINER NUT
5	901SH06-1	1	SEAL RING
6	901SH05-425	6	" O " RING
7	901PN017-004	3	SEAL , " O " RING BACK - UP

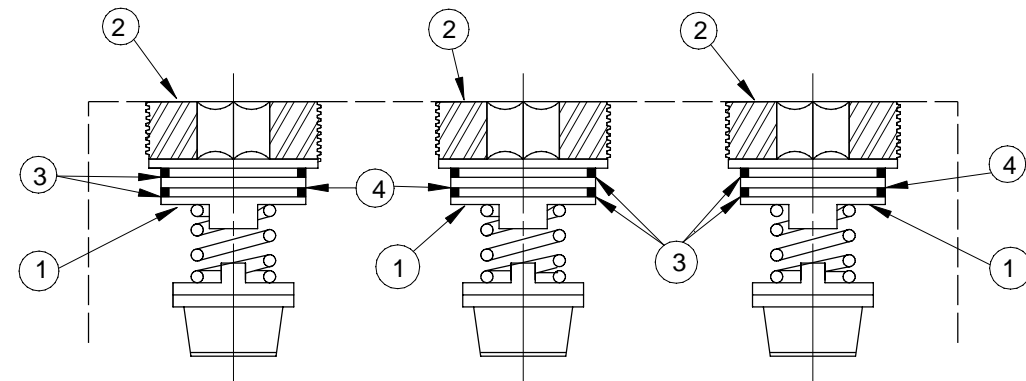


ITEM NO.	PART NO.	QTY.	DESCRIPTION
1	73PN04	2	DISCHARGE COVER , GAUGE CONNECTION
2	342-A-28	2	RETAINER NUT , GAUGE CONNECTION
3	71PN03	1	DISCHARGE COVER
4	342-A-70	1	DISCHARGE COVER , RETAINER NUT
5	901SH06-1	2	SEAL RING
6	901SH05-425	6	" O " RING
7	901PN017-004	3	SEAL , " O " RING BACK - UP

1000 HP 3 3/4 and 4
Discharge Cover
Option
71OL002

DISCHARGE COVER ASSEMBLY - HIGH PRESSURE

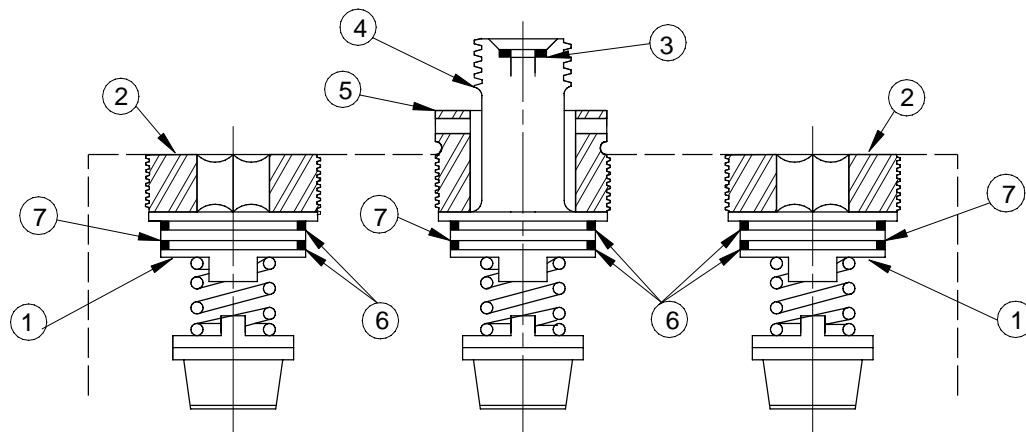
071AD003



ITEM NO.	PART NO.	QTY.	DESCRIPTION
1	71PN01	3	DISCHARGE COVER
2	342-A-70	3	DISCHARGE RETAINER NUT, INTERNAL HEX
3	901SH05-427	6	" O " RING
4	901PN017-005	3	SEAL, " O " RING BACK UP

DISCHARGE COVER ASSEMBLY W/ GAUGE CONNECTION

073AD003 - HIGH PRESSURE



ITEM NO.	PART NO.	QTY.	DESCRIPTION
1	71PN01	2	DISCHARGE COVER
2	342-A-70	2	DISCHARGE RETAINER NUT, INTERNAL HEX
3	901SH06-1	1	SEAL RING, 2" 1502
4	72PN012	1	DISCHARGE COVER W/ 2" 1502 GAUGE CONNECTION
5	342-A-28	1	RETAINER NUT FOR GAUGE CONNECTION
6	901SH05-427	6	" O " RING
7	901PN017-005	3	SEAL, " O " RING BACK UP

1000 H. P. DISCHARGE COVER OPTION

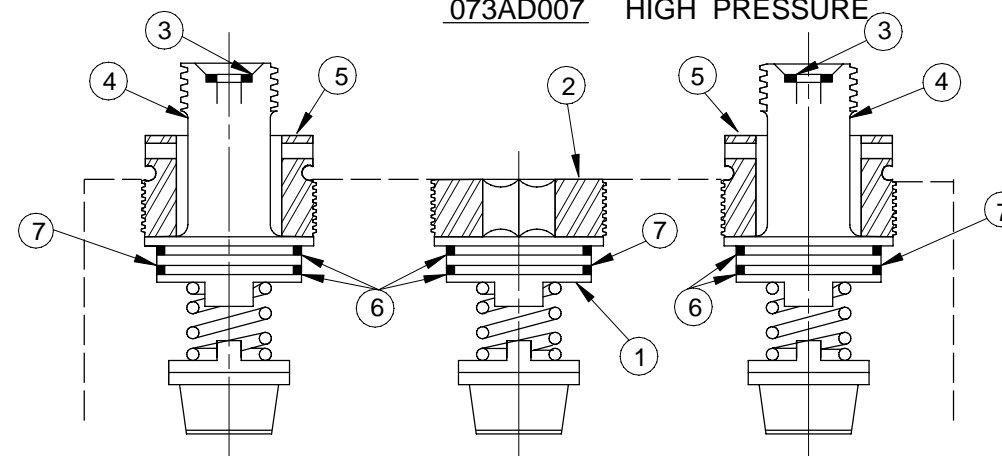
071 OL 003

* NOTE ;

THIS OPTION FOR USE WITH
4-1/2" INCH FLUID ENDS.

DISCHARGE COVER ASSEMBLY, GAUGE CONNECTION

073AD007 HIGH PRESSURE



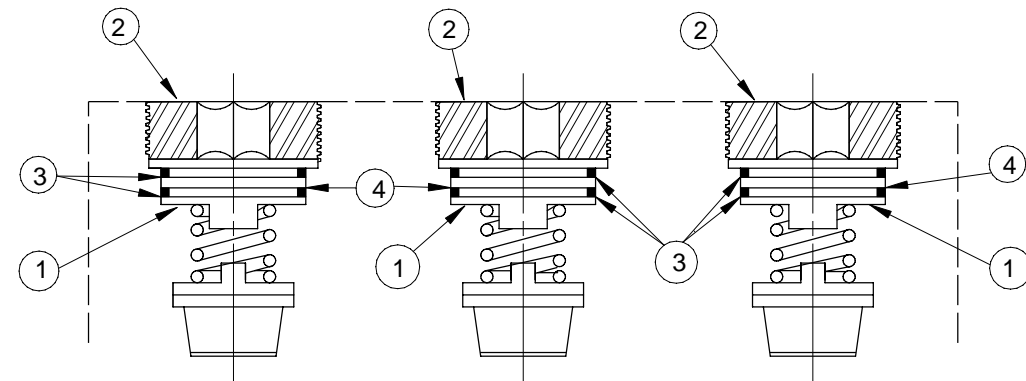
ITEM NO.	PART NO.	QTY.	DESCRIPTION
1	71PN01	1	DISCHARGE COVER
2	342-A-70	1	DISCHARGE RETAINER NUT, INTERNAL HEX
3	901SH06-1	2	SEAL RING, 2" 1002 / 1502
4	72PN012	2	DISCHARGE COVER, GAUGE CONNECTION, 2" 1502
5	342-A-28	2	RETAINER NUT, GAUGE CONNECTION
6	901SH05-427	6	" O " RING
7	901PN017-005	3	SEAL, " RING BACK UP

OFM PUMP, INC.

DRAWN LDG	9/16/02	1000 H. P. DISCH. COVER OPTION
OPTIONS FOR 4-1/2" INCH FLUID ENDS		
APPROVED FCF	9/16/02	SIZE C
SCALE 1 : 5	REV -	DWG NUMBER 071OL003
		SHEET 1 OF 1

DISCHARGE COVER ASSEMBLY

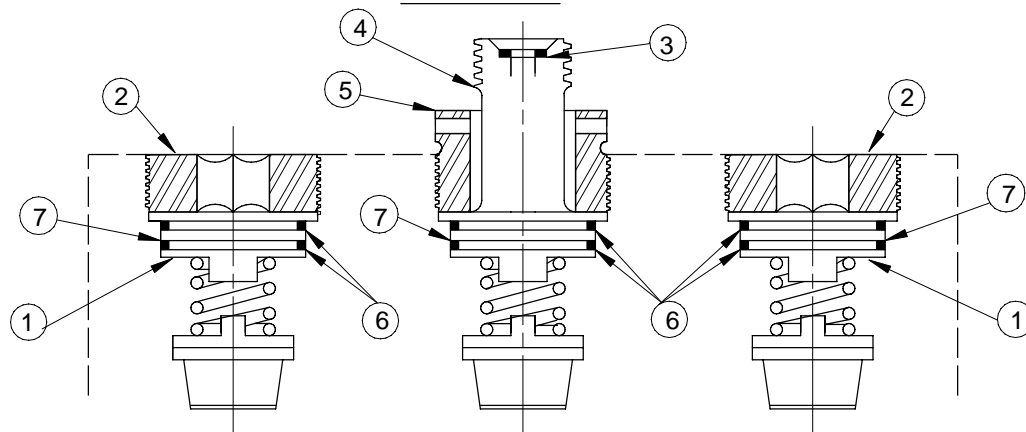
071AD004



ITEM NO.	PART NO.	QTY.	DESCRIPTION
1	71PN01	3	DISCHARGE COVER
2	51PN07	3	DISCHARGE RETAINER NUT , INTERNAL HEX
3	901SH05-427	6	" O " RING
4	901PN017-005	3	SEAL , " O " RING BACK UP

DISCHARGE COVER ASSEMBLY W/ GAUGE CONNECTION

073AD004



ITEM NO.	PART NO.	QTY.	DESCRIPTION
1	71PN01	2	DISCHARGE COVER
2	51PN07	2	DISCHARGE RETAINER NUT , INTERNAL HEX
---	-----	---	
3	901SH06-1	1	SEAL RING , 2" 1502
---	-----	---	
4	72PN012	1	DISCHARGE COVER , GAUGE CONNECTION , 2" 1502
5	54PN06	1	RETAINER NUT , GAUGE CONNECTION
6	901SH05-427	6	" O " RING
7	901PN017-005	3	SEAL , " O " RING BACK UP

1000 H. P. DISCHARGE COVER OPTION

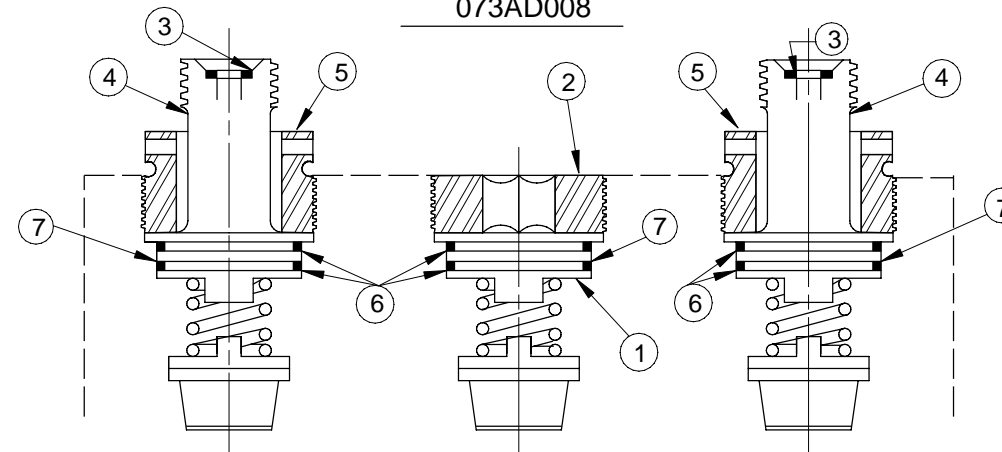
071 OL 004

* NOTE ;

THIS OPTION FOR USE WITH
5" INCH FLUID ENDS.

DISCHARGE COVER ASSEMBLY , GAUGE CONNECTION

073AD008



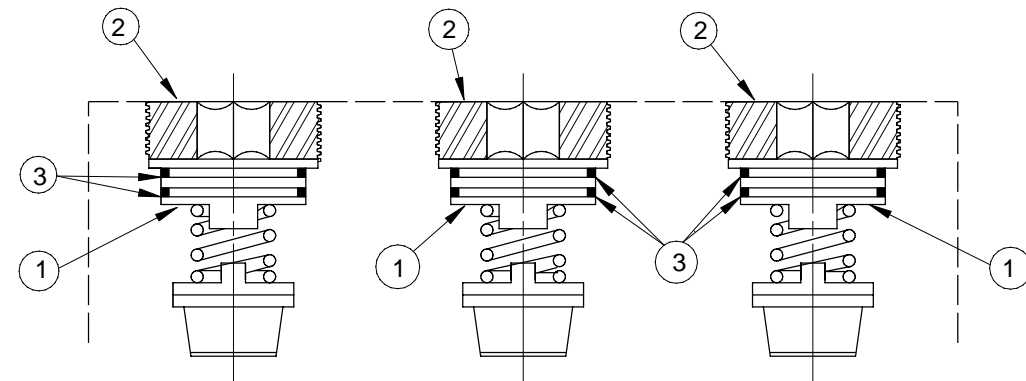
ITEM NO.	PART NO.	QTY.	DESCRIPTION
1	71PN01	1	DISCHARGE COVER
2	51PN07	1	DISCHARGE RETAINER NUT , INTERNAL HEX
---	-----	---	
3	901SH06-1	2	SEAL , RING 2" 1502
---	-----	---	
4	72PN012	2	DISCHARGE COVER , GAUGE CONNECTION 2" 1502
5	54PN06	2	RETAINER NUT , GAUGE CONNECTION
6	901SH05-427	6	" O " RING
7	901PN017-005	3	SEAL , " O " RING BACK UP

OFM PUMP , INC.

DRAWN LDG	9/16/02	1000 H. P. DISCH. COVER OPTION	
OPTIONS FOR 5" INCH FLUID ENDS		SIZE C	DWG NUMBER 071OL004
APPROVED FCF	9/16/02	REV -	SHEET 1 OF 1
SCALE 1 : 5			

DISCHARGE COVER ASSEMBLY - LOW PRESSURE

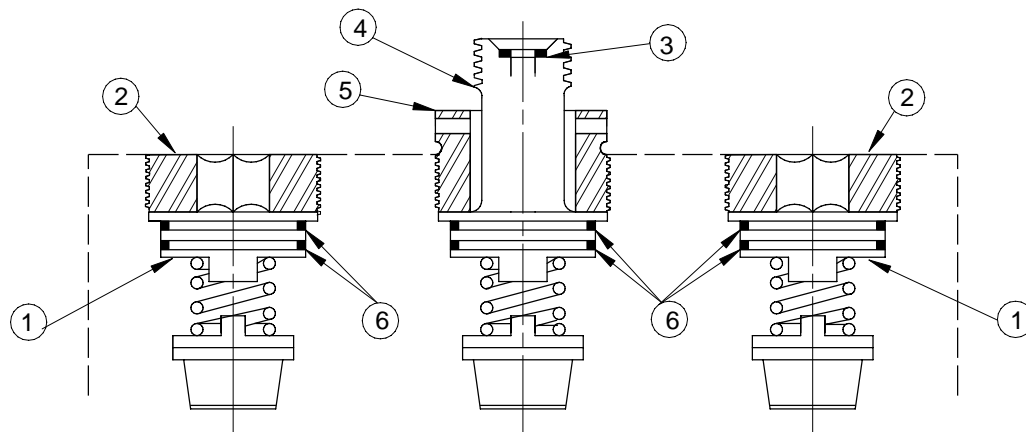
070AD002



ITEM NO.	PART NO.	QTY.	DESCRIPTION
1	71PN07	3	DISCHARGE COVER
2	50PN13	3	DISCHARGE RETAINER NUT, INTERNAL HEX
3	901SH05-432	6	" O " RING

DISCHARGE COVER ASSEMBLY W/ GAUGE CONNECTION

072AD002 - LOW PRESSURE



ITEM NO.	PART NO.	QTY.	DESCRIPTION
1	71PN07	2	DISCHARGE COVER
2	50PN13	2	DISCHARGE RETAINER NUT, INTERNAL HEX
3	901SH06-1	1	SEAL RING, 2" 1002 / 1502
4	72PN014	1	DISCHARGE COVER W/ 2" 1502 GAUGE CONNECTION
5	54PN01	1	RETAINER NUT FOR GAUGE CONNECTION
6	901SH05-432	6	" O " RING

1000 THRU 2000 DISCHARGE COVER OPTION

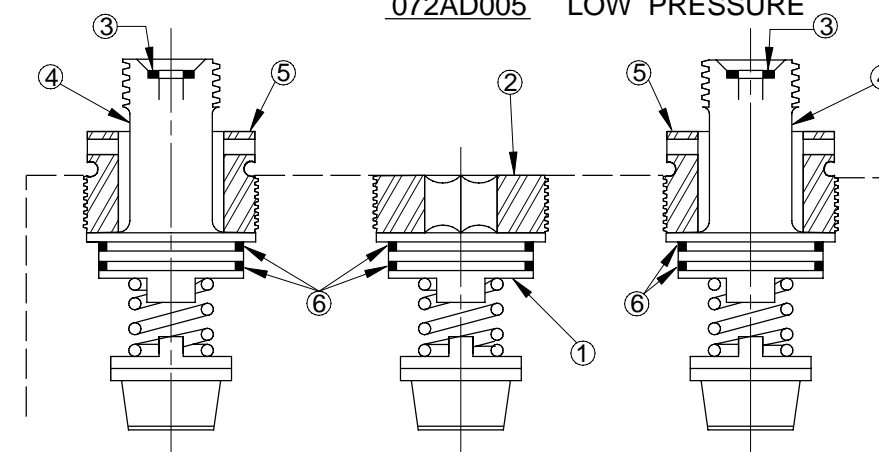
070 OL 002

* NOTE ;

THIS OPTION FOR USE WITH
5-1/2" , 5-3/4" , & 6" INCH FLUID ENDS

DISCHARGE COVER ASSEMBLY , GAUGE CONNECTION

072AD005 LOW PRESSURE



ITEM NO.	PART NO.	QTY.	DESCRIPTION
1	71PN07	1	DISCHARGE COVER
2	50PN13	1	DISCHARGE RETAINER NUT, INTERNAL HEX
3	901SH06-1	2	SEAL RING, 2" 1002 / 1502
4	72PN014	2	DISCHARGE COVER, GAUGE CONNECTION, 2" 1502
5	54PN01	2	RETAINER NUT, GAUGE CONNECTION
6	901SH05-432	6	" O " RING

OFM PUMP, INC.

DRAWN LDG 9/16/02
 OPTIONS FOR 5-1/2", 5-3/4", 6" FLUID ENDS
 APPROVED FCF 9/16/02
 SCALE 1 : 5

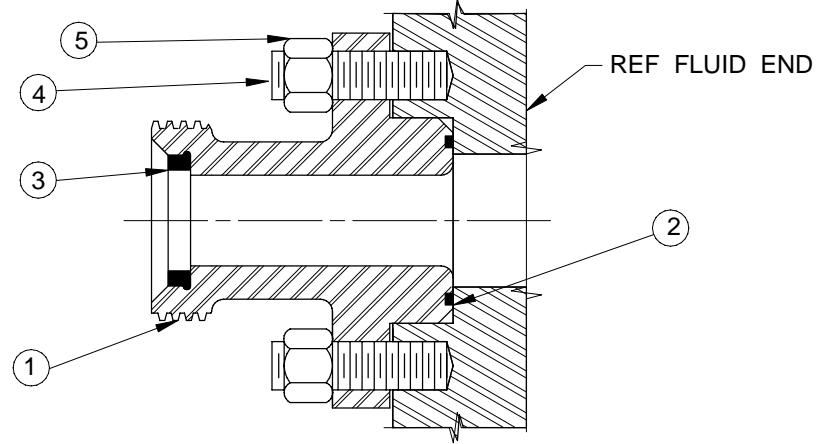
1000 THRU 2000 DISCH. COVER OPTION

SIZE DWG NUMBER
C 0700L002

REV - SHEET 1 OF 1

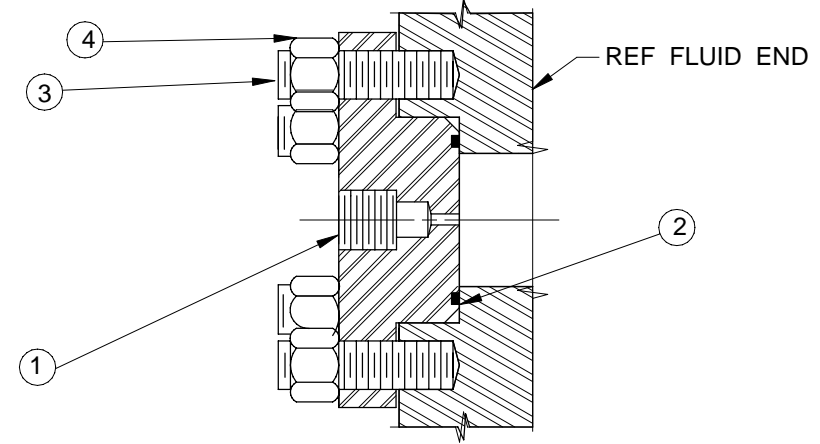
USE WITH 3-1/2" TO 5" INCH FLUID END

2" 1502 HAMMER UNION DISCHARGE FLANGE (267AD009)



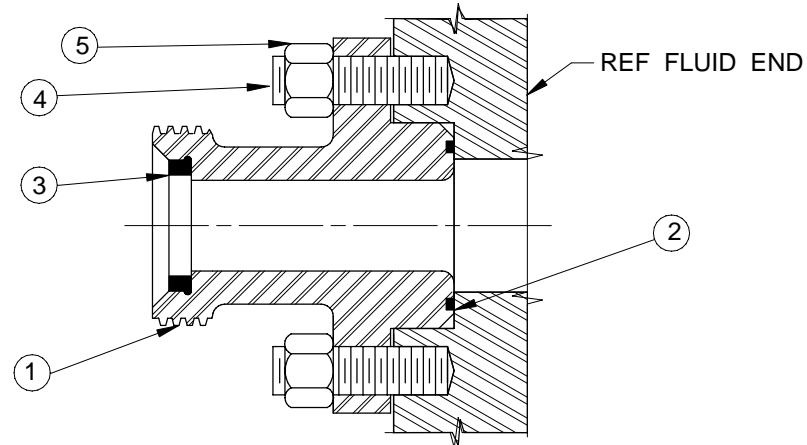
ITEM NO.	PART NO.	QTY.	DESCRIPTION
1	267PN09	1	DISCHARGE FLANGE , HAMMER UNION 2" 1502
2	901SH05-338	1	" O " RING
3	901SH06-1	1	SEAL RING
4	450VP005-034	6	STUD
5	458VP012-008	6	HEX NUT , HEAVY

20,000" PSI BLEEDOFF DISCHARGE FLANGE (268AD002)



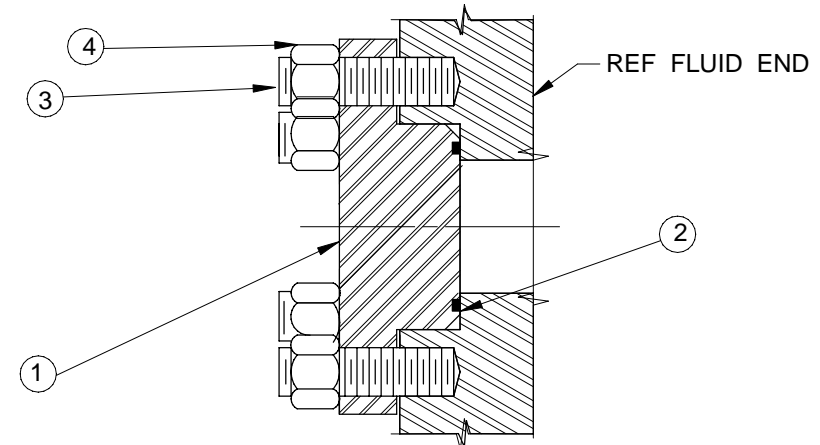
ITEM NO.	PART NO.	QTY.	DESCRIPTION
1	268PN02	1	DISCHARGE FLANGE , BLEEDOFF VALVE , 20,000 PSI
2	901SH05-338	1	" O " RING
3	450VP005-034	6	STUD
4	458VP012-008	6	HEX NUT , HEAVY

3" 1502 HAMMER UNION DISCHARGE FLANGE (267AD010)



ITEM NO.	PART NO.	QTY.	DESCRIPTION
1	267PN10	1	DISCHARGE FLANGE , HAMMER UNION 3" 1502
2	901SH05-338	1	" O " RING
3	901SH06-2	1	SEAL RING
4	450VP005-034	6	STUD
5	458VP012-008	6	HEX NUT , HEAVY

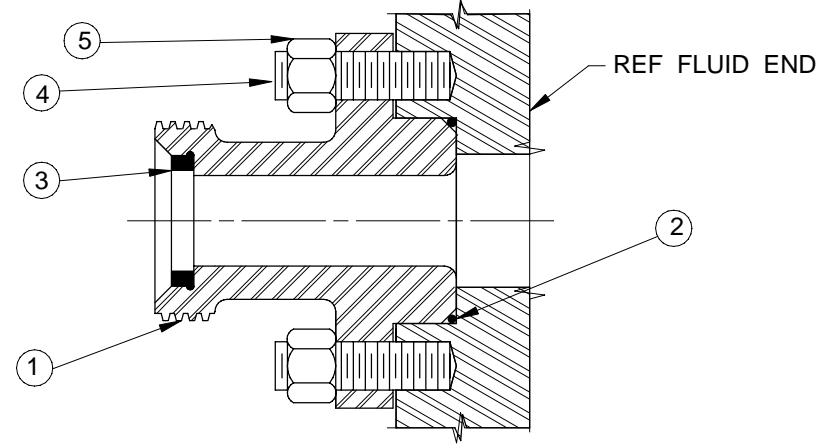
20,000" PSI BLIND DISCHARGE FLANGE (265AD003)



ITEM NO.	PART NO.	QTY.	DESCRIPTION
1	265PN03	1	DISCHARGE FLANGE , BLIND 20,000 PSI
2	901SH05-338	1	" O " RING
3	450VP005-034	6	STUD
4	458VP012-008	6	HEX NUT , HEAVY

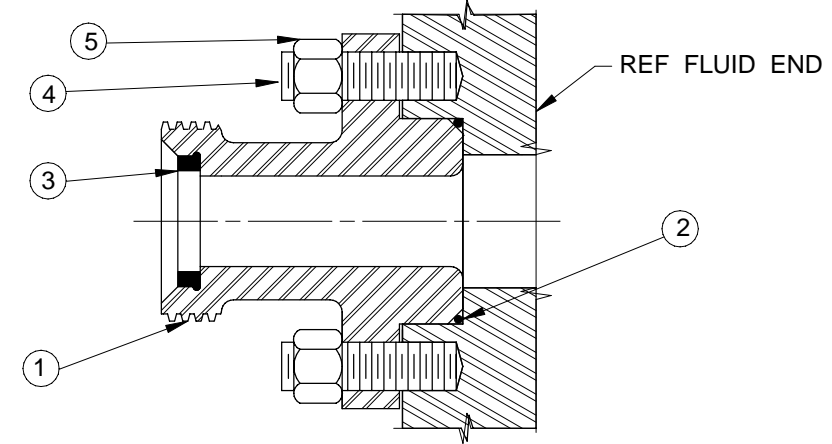
USE WITH 5-1/2" TO 6" INCH FLUID END

2" 1502 HAMMER UNION DISCHARGE FLANGE (267AD023)



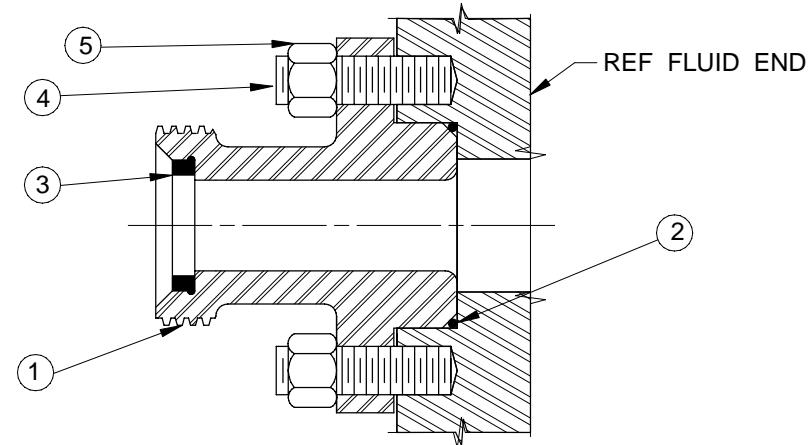
ITEM NO.	PART NO.	QTY.	DESCRIPTION
1	342-C-82	1	DISCHARGE FLANGE , HAMMER UNION 2" 1502
2	901SH05-344	1	" O " RING
3	901SH06-1	1	SEAL RING
4	450VP005-034	6	STUD
5	458VP012-008	6	HEX NUT , HEAVY

3" 1002 HAMMER UNION DISCHARGE FLANGE (267AD022)



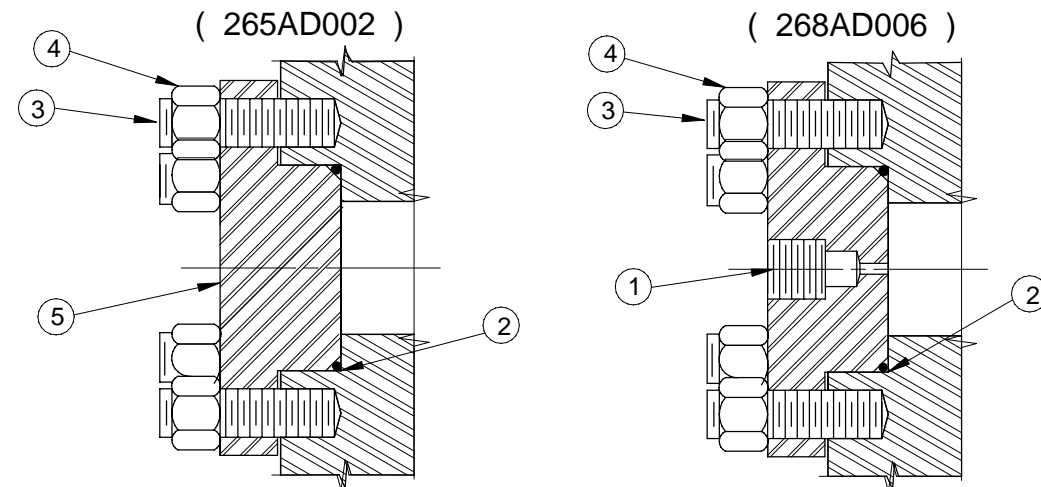
ITEM NO.	PART NO.	QTY.	DESCRIPTION
1	342-B-14	1	DISCHARGE FLANGE , HAMMER UNION 3" 1002
2	901SH05-344	1	" O " RING
3	901SH06-2	1	SEAL RING
4	450VP005-034	6	STUD
5	458VP012-008	6	HEX NUT , HEAVY

3" 1502 HAMMER UNION DISCHARGE FLANGE (267AD016)



ITEM NO.	PART NO.	QTY.	DESCRIPTION
1	342-C-52	1	DISCHARGE FLANGE , HAMMER UNION 3" 1502
2	901SH05-344	1	" O " RING
3	901SH06-2	1	SEAL RING
4	450VP005-034	6	STUD
5	458VP012-008	6	HEX NUT , HEAVY

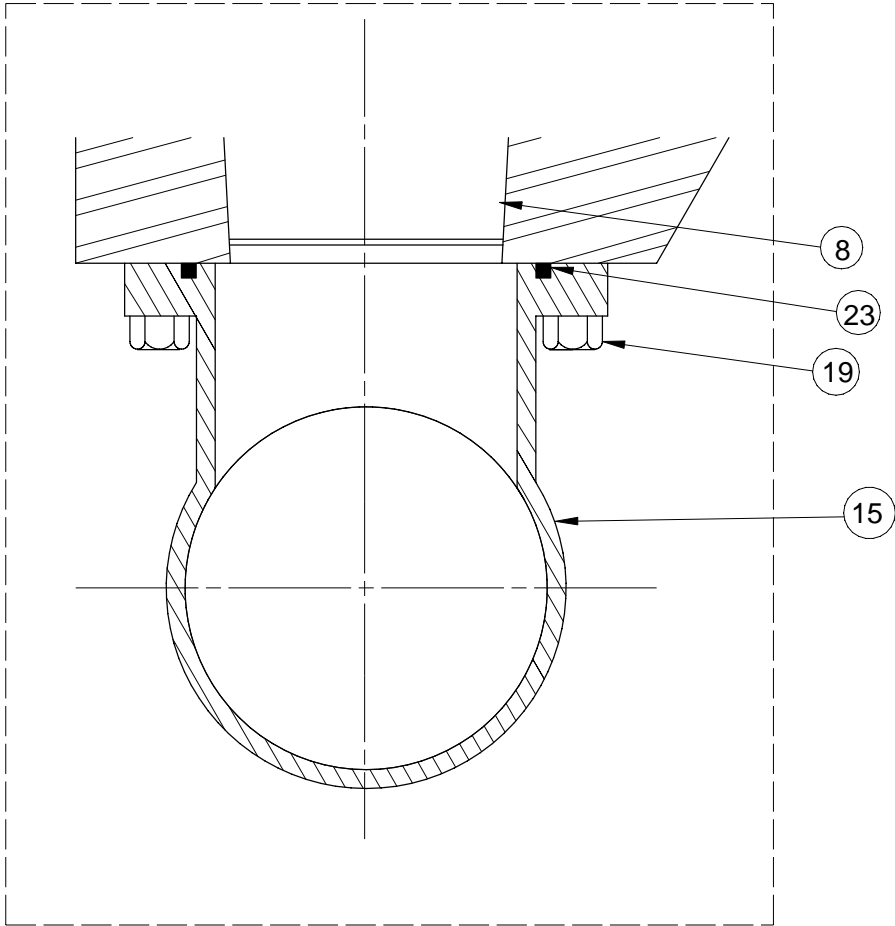
10,000" PSI BLIND AND BLEEDOFF DISCHARGE FLANGE



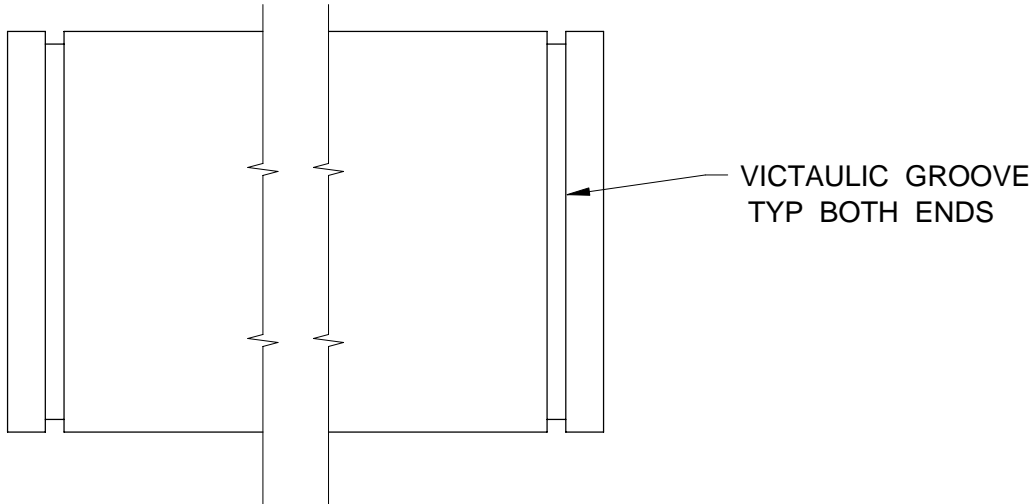
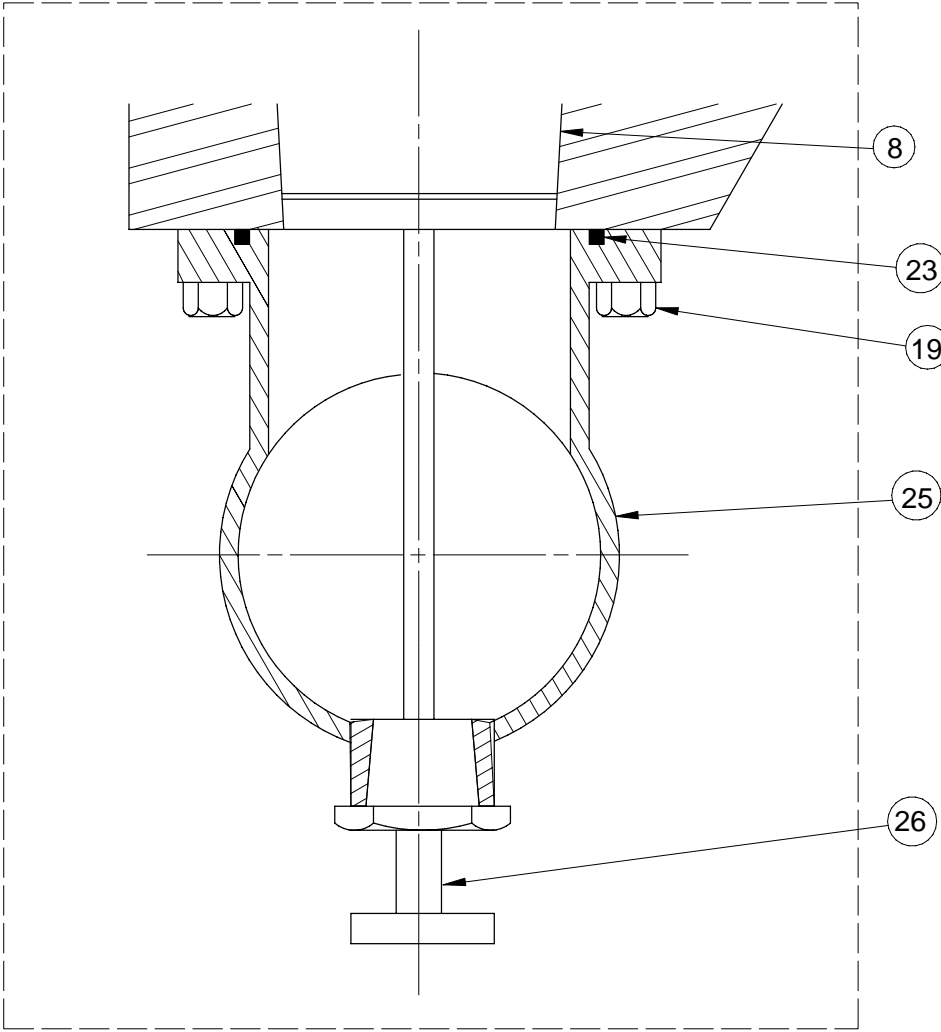
ITEM NO.	PART NO.	QTY.	DESCRIPTION
1	342-C-79	1	DISCHARGE FLANGE , BLEEDOFF VALVE 10,000 PSI
2	901SH05-344	1	" O " RING
3	450VP005-034	6	STUD
4	458VP012-008	6	HEX NUT , HEAVY
5	342-C-71	1	DISCHARGE FLANGE , BLIND 10,000 PSI

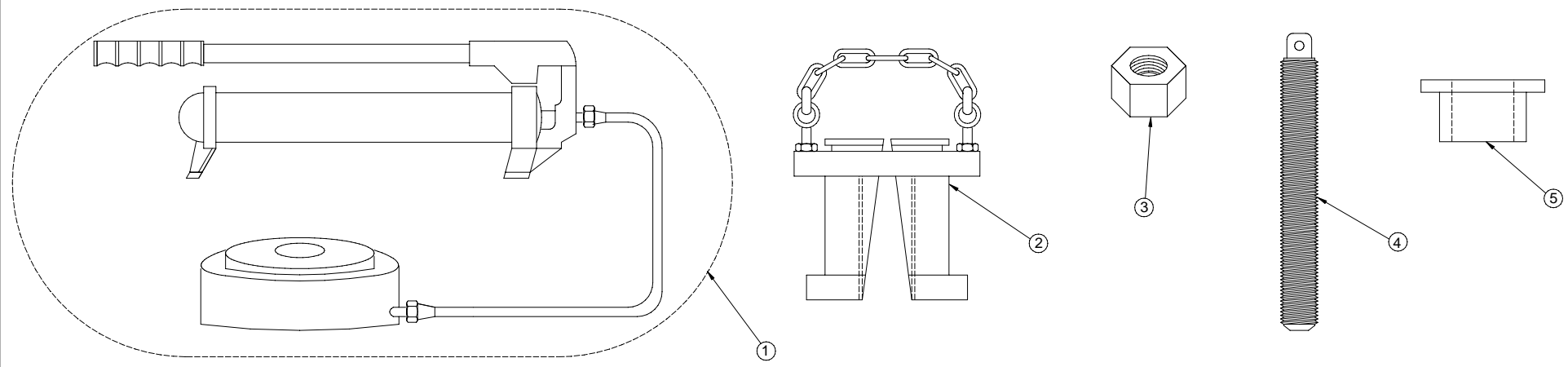
10 OL 003 - 1

SUCTION MANIFOLD PART NO. 117PN007
(STANDARD)



SUCTION MANIFOLD PART NO. 116PN008
(OPTION)





VALVE SEAT PULLER (OPTIONAL)
FOR 900 & 1000 H. P. FLUID END

	①	②	③	④	⑤	
PLUNGER SIZE	COMPLETE ASSEMBLY W / METAL TOOL BOX	VALVE SEAT PULLER NO.	PULLER HEAD NO.	HEX NUT NO.	CENTER STEM STUD NO.	CENTER STEM BUSHING NO.
3-1/2" - 4" GREEN	590AD015	590AD004	590VP005-003	458VP004-014	450VP014-003	N / R
4-1/2" - 5" RED	590AD016	590AD004	590VP005-001	458VP004-014	450VP014-003	N / R
5-1/2" - 6" BLUE	590AD017	590AD004	590VP005-004	458VP004-014	450VP014-003	N / R

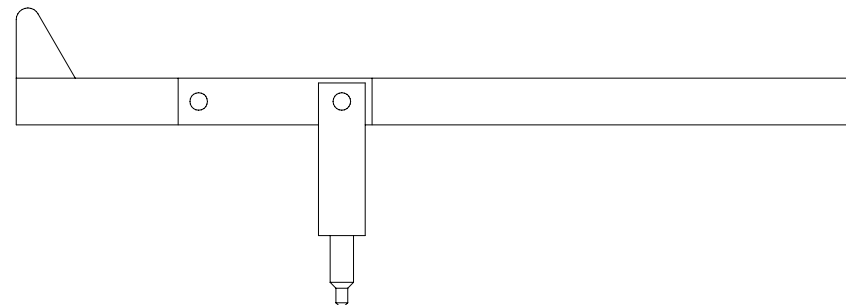
PANCAKE JACK	PART NO. 953SH01-1
HAND PUMP	PART NO. 954VP001

OFM PUMP, INC.	
<small>DRAWN L. GORRELL10/31/03</small>	VALVE SEAT PULLER ASSEMBLY
<small>900 & 1000 H. P. PUMP 3-1/2" THRU 6" F. E.</small>	<small>DWG NUMBER</small>
<small>APPROVED C. FRY 10/31/03</small>	D 590SD001
<small>SCALE 1:2</small>	<small>REV - SHEET 1 OF 1</small>

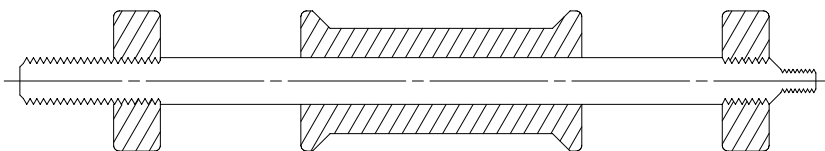


3" HEX WRENCH
PART NO. 342-A-89

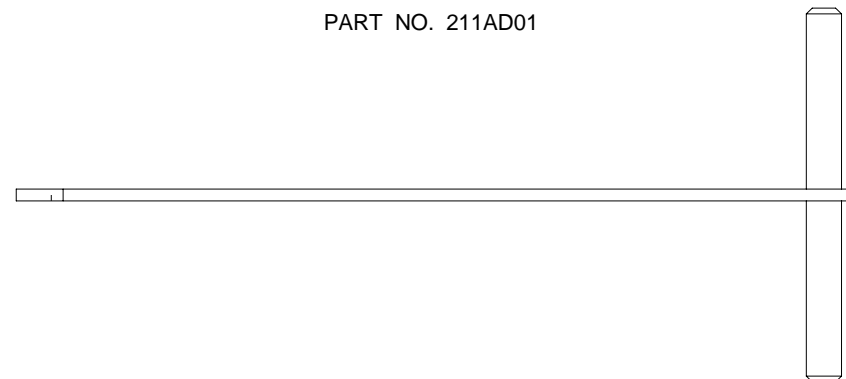
2" HEX WRENCH
PART NO. P - A - 09



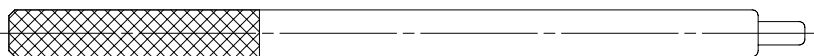
SUCTION VALVE SPRING COMPRESSOR ASSY.
PART NO. 211AD01



VALVE COVER PULLER
PART NO. 590PN006



SUCTION SPRING RETAINER PULLER
PART NO. 590PN01



PACKING NUT WRENCH
PART NO. 608PN01



MAINTENANCE TOOLS

OFM PUMP, INC.

DRAWN LDG	11/01/02	MAINTENANCE TOOLS FOR FLUID END	
APPROVED FCF	11/01/02	SIZE C	DWG NUMBER 900MT001
SCALE 1:2	REV -	SHEET 1 OF 1	